

## Product datasheet for **AM20899PU-N**

### HMGB2 Mouse Monoclonal Antibody [Clone ID: 3D2]

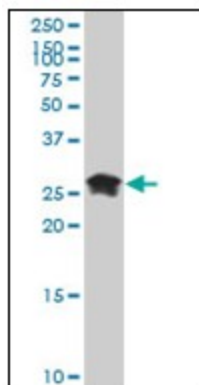
#### Product data:

Product Type:	Primary Antibodies
Clone Name:	3D2
Applications:	ELISA, IF, IHC, WB
Recommended Dilution:	<b>ELISA.</b> <b>Immunofluorescence:</b> 10 µg/ml. <b>Immunohistochemistry on Paraffin Sections:</b> 5 µg/ml. <b>Western Blot.</b>
Reactivity:	Human
Host:	Mouse
Isotype:	IgG2a
Clonality:	Monoclonal
Immunogen:	Recombinant protein, HMGB2 (AAH00903, 1 a.a. ~ 196 a.a) full length recombinant protein with GST tag. MW of the GST tag alone is 26 KDa.
Specificity:	This antibody reacts to High Mobility Group Protein Hmg2 (HMGB2).
Formulation:	PBS, pH 7.2 State: Liquid purified Ig fraction
Concentration:	lot specific
Purification:	Protein A Chromatography
Conjugation:	Unconjugated
Storage:	Store the antibody at -20°C. Avoid repeated freezing and thawing.
Stability:	Shelf life: one year from despatch.
Gene Name:	high mobility group box 2
Database Link:	<a href="#">Entrez Gene 3148 Human P26583</a>
Synonyms:	High mobility group protein B2, High mobility group protein 2
Protein Families:	Druggable Genome, Transcription Factors

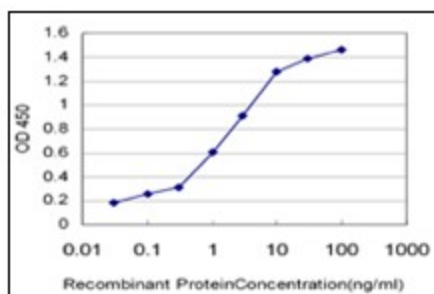


[View online »](#)

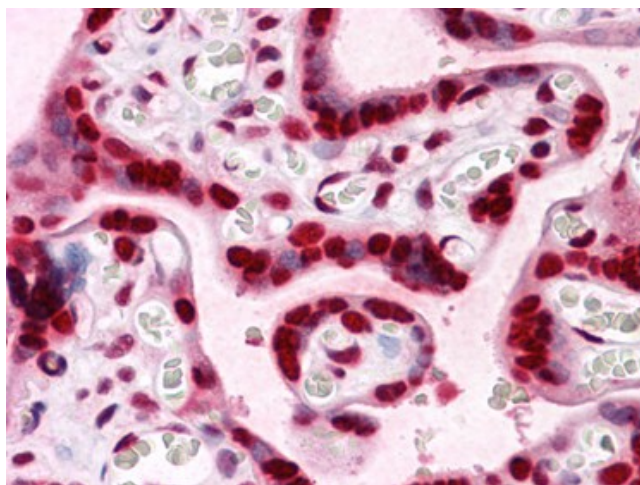
Product images:



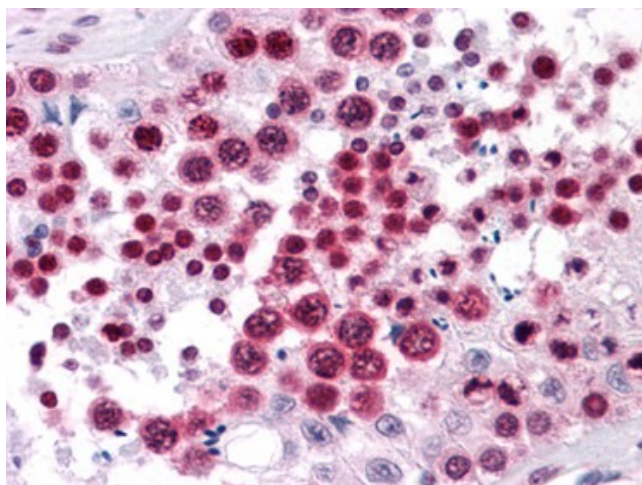
HMGB2 monoclonal antibody (M04), clone 3D2  
Western Blot analysis of HMGB2 expression in Hela NE.



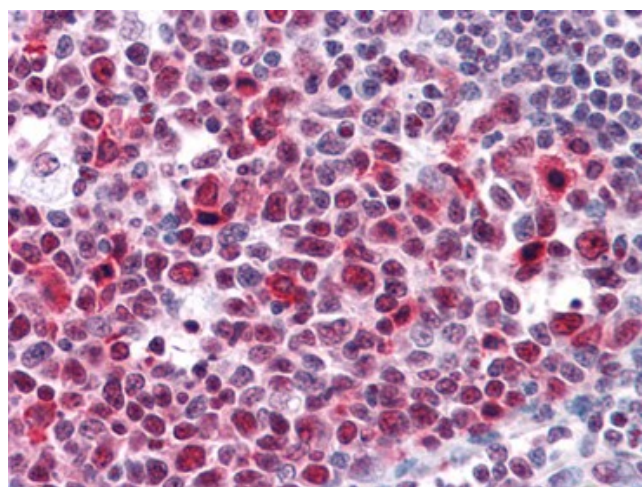
Detection limit for recombinant GST tagged HMGB2 is approximately 0.03 ng/ml as a capture antibody.



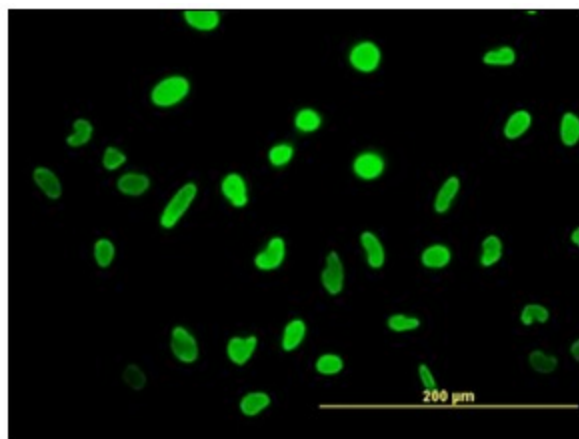
Human Placenta: Formalin-Fixed, Paraffin-Embedded (FFPE)



Human Testis: Formalin-Fixed, Paraffin-Embedded (FFPE)



Human Tonsil: Formalin-Fixed, Paraffin-Embedded (FFPE)



Immunofluorescence of monoclonal antibody to HMGB2 on HeLa cell (antibody concentration 10 ug/ml).