

Product datasheet for **AM20893PU-N**

HBA-T2 (HBB) (38-148) Mouse Monoclonal Antibody [Clone ID: 7B12]

Product data:

Product Type:	Primary Antibodies
Clone Name:	7B12
Applications:	ELISA, IHC, WB
Recommended Dilution:	ELISA. Immunohistochemistry on Paraffin Sections: 5 µg/ml. Western Blot.
Reactivity:	Human
Host:	Mouse
Isotype:	IgG1
Clonality:	Monoclonal
Immunogen:	HBB (AAH07075, 38 a.a. ~ 148 a.a) partial recombinant protein with GST tag
Specificity:	This antibody recognizes Human Hemoglobin Beta (HBB). Other species not tested.
Formulation:	PBS, pH 7.4 State: Purified State: Liquid purified Ig fraction
Concentration:	lot specific
Purification:	Protein A Chromatography
Conjugation:	Unconjugated
Storage:	Upon receipt, store undiluted (in aliquots) at -20°C. Avoid repeated freezing and thawing.
Stability:	Shelf life: one year from despatch.
Gene Name:	hemoglobin subunit beta
Database Link:	Entrez Gene 3043 Human P68871



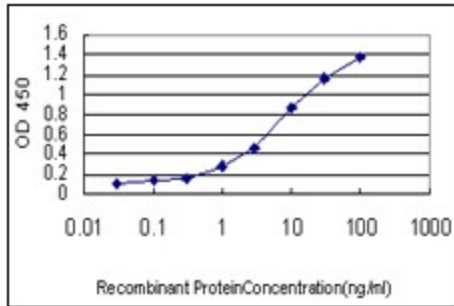
[View online »](#)

Background:

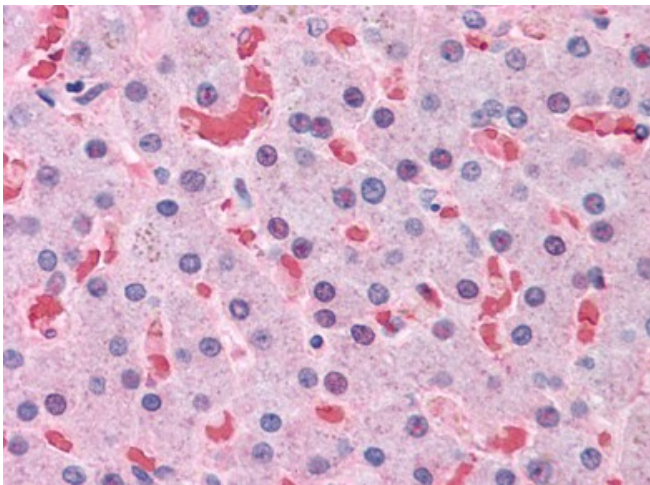
The alpha (HBA) and beta (HBB) loci determine the structure of the 2 types of polypeptide chains in adult hemoglobin, Hb A. The normal adult hemoglobin tetramer consists of two alpha chains and two beta chains. Mutant beta globin that sickles causes sickle cell anemia. Absence of beta chain causes beta-zero-thalassemia. Reduced amounts of detectable beta globin causes beta-plus-thalassemia. The order of the genes in the beta-globin cluster is 5'-epsilon -- gamma-G -- gamma-A -- delta -- beta--3'.

Synonyms:

Beta-globin, HBB

Product images:


Detection limit for recombinant GST tagged HBB is approximately 0.1 ng/ml as a capture antibody.



Human Liver: Formalin-Fixed, Paraffin-Embedded (FFPE)