

Product datasheet for **AM20884PU-N**

EMX2 (103-201) Mouse Monoclonal Antibody [Clone ID: 4F7]

Product data:

Product Type:	Primary Antibodies
Clone Name:	4F7
Applications:	ELISA, IHC
Recommended Dilution:	ELISA. Immunohistochemistry on Paraffin Sections: 5 µg/ml.
Reactivity:	Human
Host:	Mouse
Isotype:	IgG2b
Clonality:	Monoclonal
Immunogen:	Recombinant protein, EMX2 (NP_004089, 103 a.a. ~ 201 a.a) partial recombinant protein with GST tag
Specificity:	This antibody reacts to Human Empty Spiracles Homolog 2 (EMX2) at aa 103-201.
Formulation:	PBS, pH 7.4 State: Purified State: Liquid purified Ig fraction
Concentration:	lot specific
Purification:	Protein A Chromatography
Conjugation:	Unconjugated
Storage:	Upon receipt, store undiluted (in aliquots) at -20°C. Avoid repeated freezing and thawing.
Stability:	Shelf life: one year from despatch.
Gene Name:	empty spiracles homeobox 2
Database Link:	Entrez Gene 2018 Human Q04743



[View online »](#)

Background:

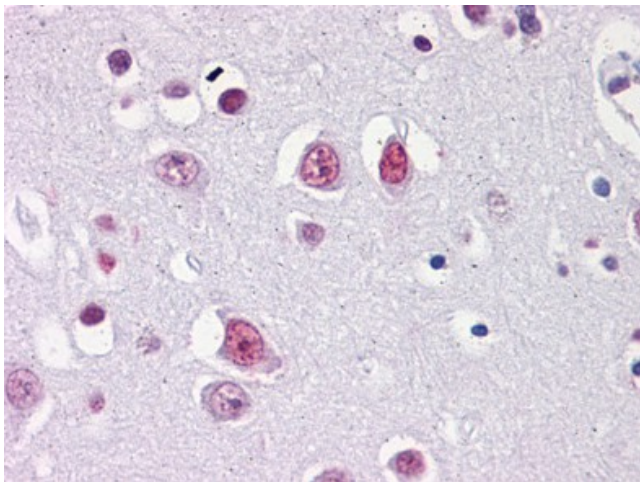
EMX2 is a homeobox-containing transcription factor that is the homolog to the 'empty spiracles' gene in *Drosophila*. Research on this gene in humans has focused on its expression in three tissues: dorsal telencephalon, olfactory neuroepithelium, and urogenital system. It is expressed in the dorsal telencephalon during development in a low rostral-lateral to high caudal-medial gradient and is proposed to pattern the neocortex into defined functional areas.

Synonyms:

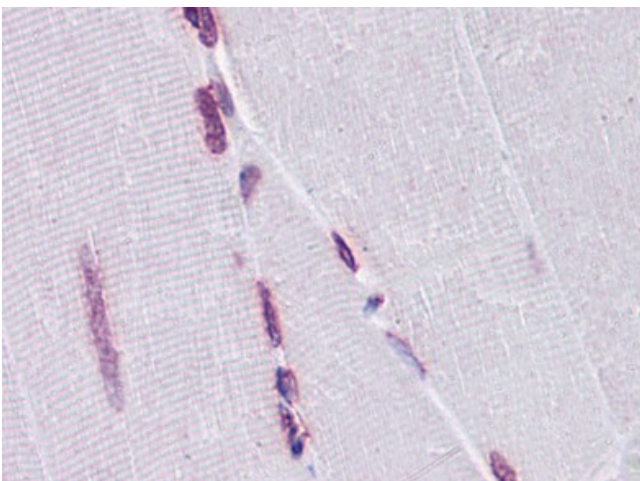
Empty spiracles homolog 2, Empty spiracles-like protein 2, Homeobox protein EMX-2

Protein Families:

Druggable Genome

Product images:

Human Brain, cortex: Formalin-Fixed, Paraffin-Embedded (FFPE)



Human Skeletal muscle: Formalin-Fixed, Paraffin-Embedded (FFPE)