

## Product datasheet for **AM20883PU-N**

### ELAVL1 Mouse Monoclonal Antibody [Clone ID: 4G8]

#### Product data:

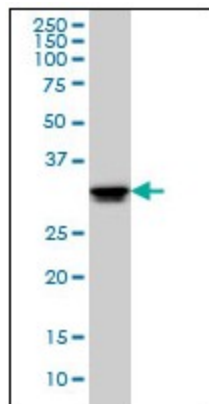
Product Type:	Primary Antibodies
Clone Name:	4G8
Applications:	ELISA, IF, IHC, WB
Recommended Dilution:	<b>ELISA.</b> <b>Immunofluorescence:</b> 10 µg/ml. <b>Immunohistochemistry on Paraffin Sections:</b> 10 µg/ml. <b>Western Blot.</b>
Reactivity:	Human
Host:	Mouse
Isotype:	IgG1
Clonality:	Monoclonal
Immunogen:	Recombinant protein, ELAVL1 (AAH03376, 1 a.a. ~ 101 a.a) partial recombinant protein with GST tag. MW of the GST tag alone is 26 KDa.
Specificity:	This antibody reacts to Hur RNA Binding Protein (ELAVL1).
Formulation:	PBS, pH 7.2 State: Liquid purified Ig fraction
Concentration:	lot specific
Purification:	Protein A Chromatography
Conjugation:	Unconjugated
Storage:	Upon receipt, store undiluted (in aliquots) at -20°C. Avoid repeated freezing and thawing.
Stability:	Shelf life: one year from despatch.
Gene Name:	ELAV like RNA binding protein 1
Database Link:	<a href="#">Entrez Gene 1994 Human Q15717</a>
Background:	A member of the ELAVL protein family, ELAVL1 contains 3 RNA-binding domains and binds cis-acting AU-rich elements. It destabilizes mRNAs and thereby regulates gene expression.



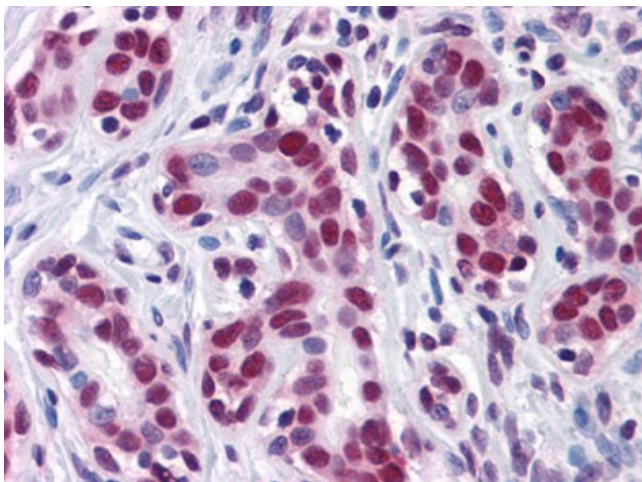
[View online »](#)

Synonyms: ELAV-like protein 1, Hu-antigen R

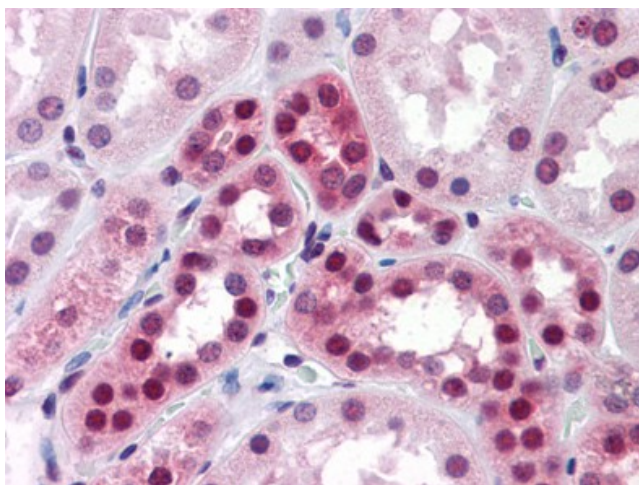
**Product images:**



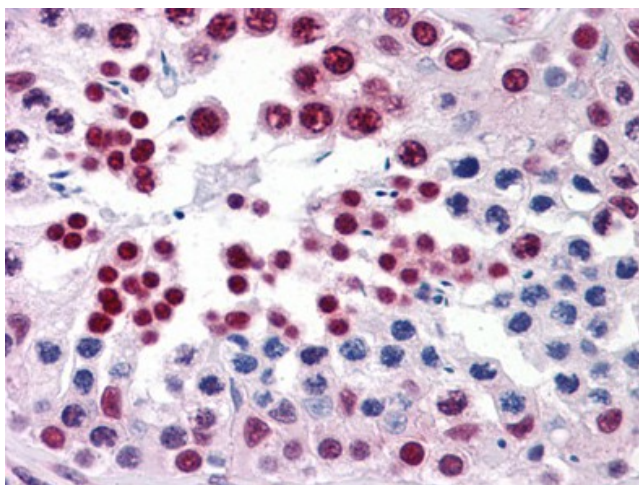
ELAVL1 monoclonal antibody clone 4G8 Western Blot analysis of ELAVL1 expression in HeLa.



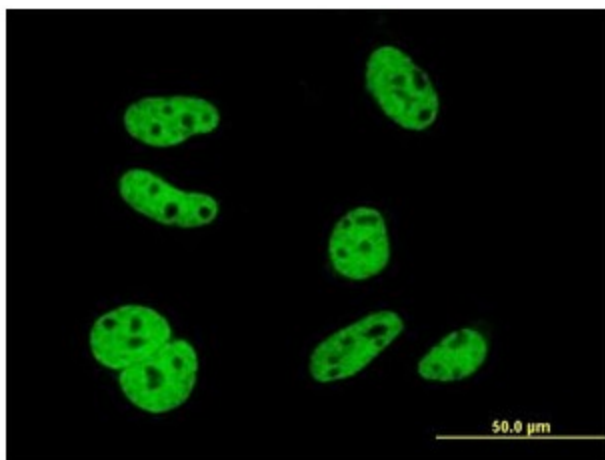
Human Breast: Formalin-Fixed, Paraffin-Embedded (FFPE)



Human Kidney: Formalin-Fixed, Paraffin-Embedded (FFPE)



Human Testis: Formalin-Fixed, Paraffin-Embedded (FFPE)



Immunofluorescence of monoclonal antibody to ELAVL1 on HeLa cell (antibody concentration 10 ug/ml).