

## Product datasheet for **AM20882PU-N**

### DUT Mouse Monoclonal Antibody [Clone ID: 1C9]

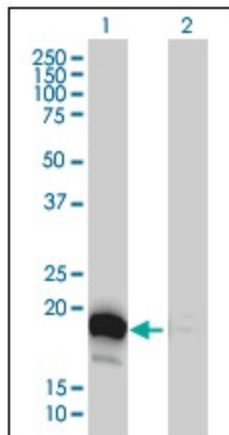
#### Product data:

Product Type:	Primary Antibodies
Clone Name:	1C9
Applications:	ELISA, IF, IHC, WB
Recommended Dilution:	<b>ELISA.</b> <b>Immunofluorescence:</b> 10 µg/ml. <b>Immunohistochemistry on Paraffin Sections:</b> 5 µg/ml. <b>Western Blot.</b>
Reactivity:	Human
Host:	Mouse
Isotype:	IgG1
Clonality:	Monoclonal
Immunogen:	Recombinant protein, DUT (AAH33645, 68 a.a. ~ 164 a.a) partial recombinant protein with GST tag. MW of the GST tag alone is 26 KDa.
Specificity:	This antibody reacts to DUTP Pyrophosphatase (DUT).
Formulation:	PBS, pH 7.2 State: Liquid purified Ig fraction
Purification:	Protein A Chromatography
Conjugation:	Unconjugated
Storage:	Store the antibody at -20°C. Avoid repeated freezing and thawing.
Stability:	Shelf life: one year from despatch.
Gene Name:	deoxyuridine triphosphatase
Database Link:	<a href="#">Entrez Gene 1854 Human P33316</a>
Synonyms:	dUTPase, dUTP pyrophosphatase
Protein Families:	Druggable Genome
Protein Pathways:	Metabolic pathways, Pyrimidine metabolism

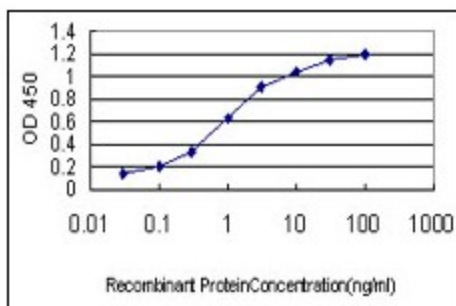


[View online »](#)

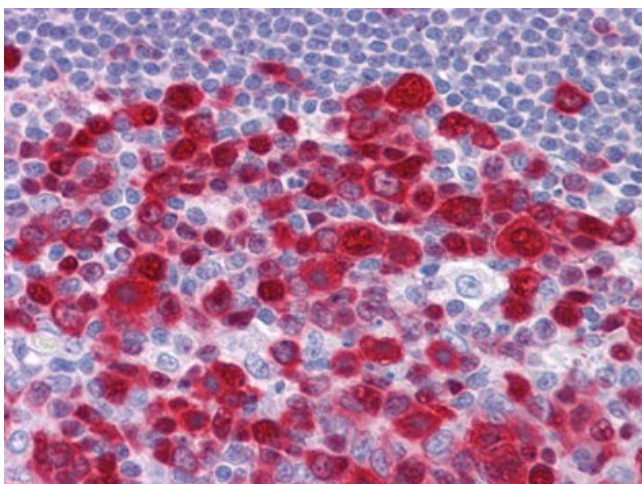
Product images:



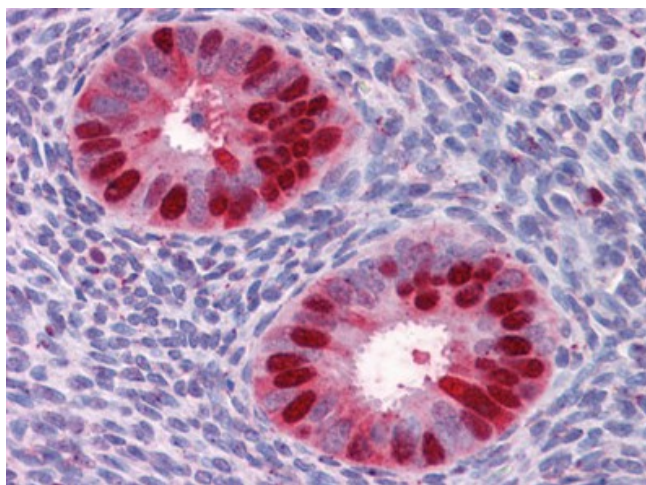
Western Blot analysis of DUT expression in transfected 293T cell line by DUT monoclonal antibody clone 1C9.



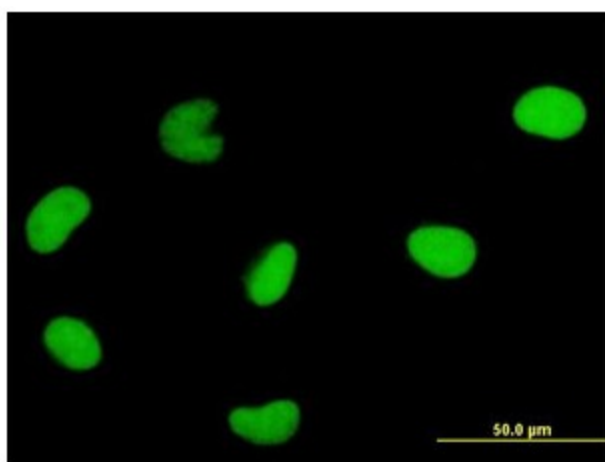
Detection limit for recombinant GST tagged DUT is approximately 0.03 ng/ml as a capture antibody.



Human Tonsil: Formalin-Fixed, Paraffin-Embedded (FFPE)



Human Uterus: Formalin-Fixed, Paraffin-Embedded (FFPE)



Immunofluorescence of monoclonal antibody to DUT on HeLa cell (antibody concentration 10 ug/ml).