

Product datasheet for **AM20881PU-N**

DUSP6 Mouse Monoclonal Antibody [Clone ID: 3G2]

Product data:

Product Type:	Primary Antibodies
Clone Name:	3G2
Applications:	ELISA, IF, IHC, RNAi, WB
Recommended Dilution:	ELISA. Immunofluorescence: 10 µg/ml. Immunohistochemistry on Paraffin Sections: 5 µg/ml. RNAi. Western Blot.
Reactivity:	Human
Host:	Mouse
Isotype:	IgG1
Clonality:	Monoclonal
Immunogen:	Recombinant protein, DUSP6 (AAH03143, 1 a.a. ~ 382 a.a) full length recombinant protein with GST tag. MW of the GST tag alone is 26 KDa.
Specificity:	This antibody reacts to Dual Specificity Protein Phosphatase 6 (DUSP6/MKP3).
Formulation:	PBS, pH 7.2 State: Liquid purified Ig fraction
Purification:	Protein A Chromatography
Conjugation:	Unconjugated
Storage:	Store the antibody at -20°C. Avoid repeated freezing and thawing.
Stability:	Shelf life: one year from despatch.
Gene Name:	dual specificity phosphatase 6
Database Link:	Entrez Gene 1848 Human Q16828



[View online »](#)

Background:

DUSP6 is a dual specificity MAP kinase phosphatase which has been shown to block the phosphorylation and enzymatic activation by mitogens of ERKs, especially ERK2. It has been shown to affect Schwann cell differentiation, apoptosis of olfactory neuroepithelium, synaptic remodeling, and neuronal differentiation and death. At least two mRNA splice variants have been reported. Altered expression of DUSP6 has been demonstrated in methamphetamine-sensitized rat brain and in rat brain following intimal hyperplasia. DUSP6 has been mapped 12q21, one of the regions of frequent allelic loss in pancreatic cancer.

Synonyms:

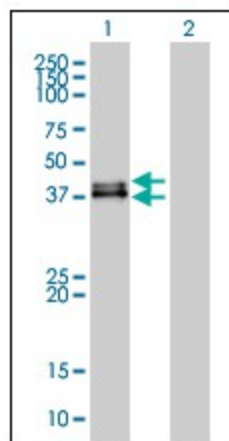
MKP3, PYST1, Dual specificity protein phosphatase 6

Protein Families:

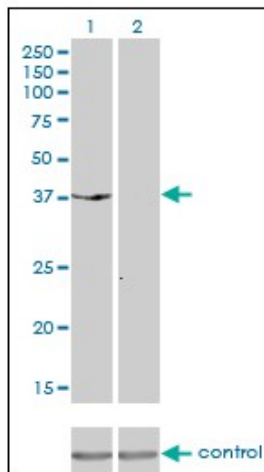
Druggable Genome, Phosphatase

Protein Pathways:

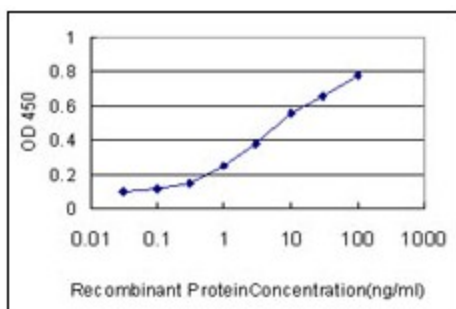
MAPK signaling pathway

Product images:

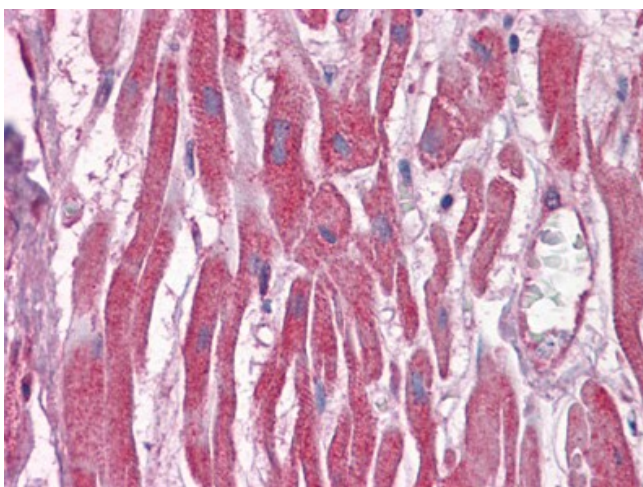
Western Blot analysis of DUSP6 expression in transfected 293T cell line by DUSP6 monoclonal antibody, clone 3G2.



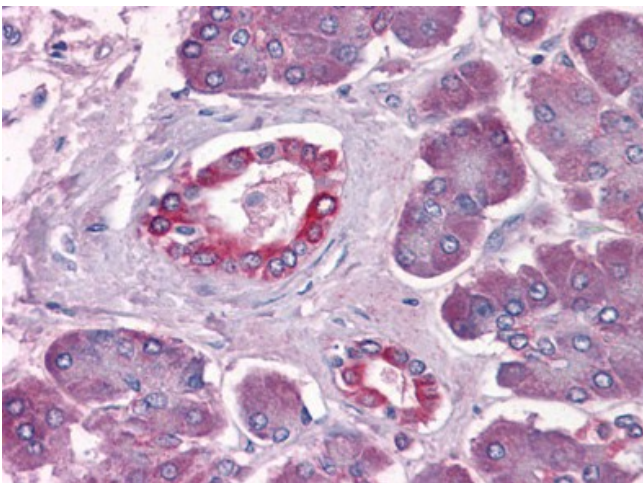
Western blot analysis of DUSP6 over-expressed 293 cell line, cotransfected with DUSP6 Validated Chimera RNAi (Lane 2) or non-transfected control (Lane 1). Blot probed with DUSP6 monoclonal antibody clone 3G2.



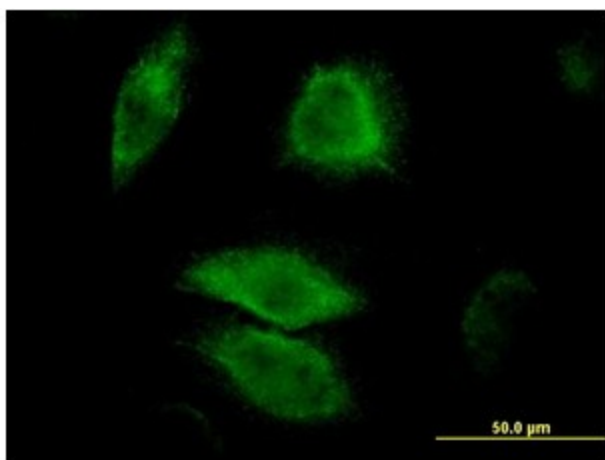
Detection limit for recombinant GST tagged DUSP6 is approximately 1 ng/ml as a capture antibody.



Human Heart: Formalin-Fixed, Paraffin-Embedded (FFPE)



Human Pancreas: Formalin-Fixed, Paraffin-Embedded (FFPE)



Immunofluorescence of monoclonal antibody to DUSP6 on HeLa cell (antibody concentration 10 ug/ml).