

## Product datasheet for **AM20876PU-N**

### **CUX1 Mouse Monoclonal Antibody [Clone ID: 2A10]**

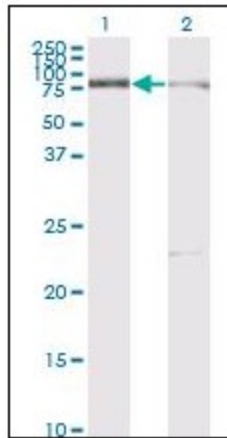
#### **Product data:**

Product Type:	Primary Antibodies
Clone Name:	2A10
Applications:	ELISA, IF, IHC, WB
Recommended Dilution:	<b>ELISA.</b> <b>Immunofluorescence:</b> 10 µg/ml. <b>Immunohistochemistry on Paraffin Sections:</b> 5 µg/ml. <b>Western Blot.</b>
Reactivity:	Human
Host:	Mouse
Isotype:	IgG1
Clonality:	Monoclonal
Immunogen:	Partial Recombinant protein CUTL1 (AAH25422, 521 a.a. ~ 621 a.a) with GST tag. MW of the GST tag alone is 26 KDa.
Specificity:	This antibody reacts to Cut-Like Homeobox 1 (CUX1).
Formulation:	PBS, pH 7.2 State: Liquid purified Ig fraction
Concentration:	lot specific
Purification:	Protein A Chromatography
Conjugation:	Unconjugated
Storage:	Store the antibody at -20°C. Avoid repeated freezing and thawing.
Stability:	Shelf life: one year from despatch.
Gene Name:	cut like homeobox 1
Database Link:	<a href="#">Entrez Gene 1523 Human Q13948</a>
Synonyms:	CUTL1, CUX1
Protein Families:	Transcription Factors, Transmembrane

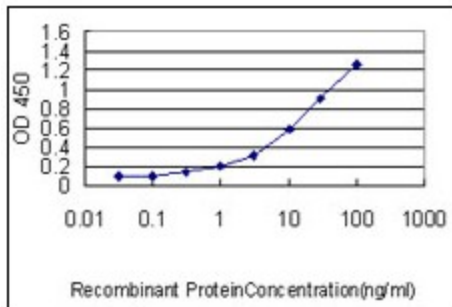


[View online »](#)

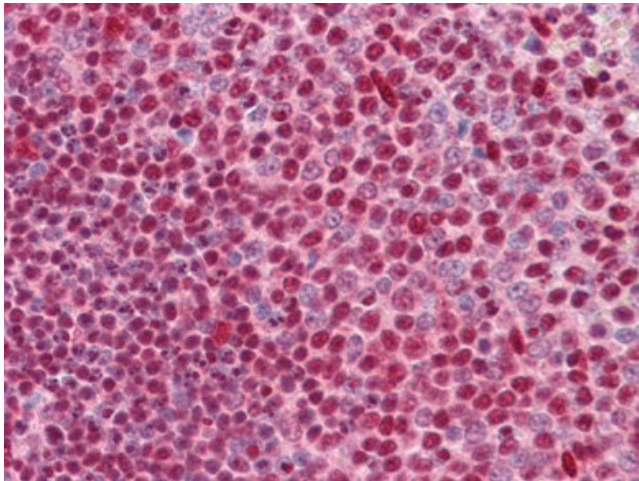
Product images:



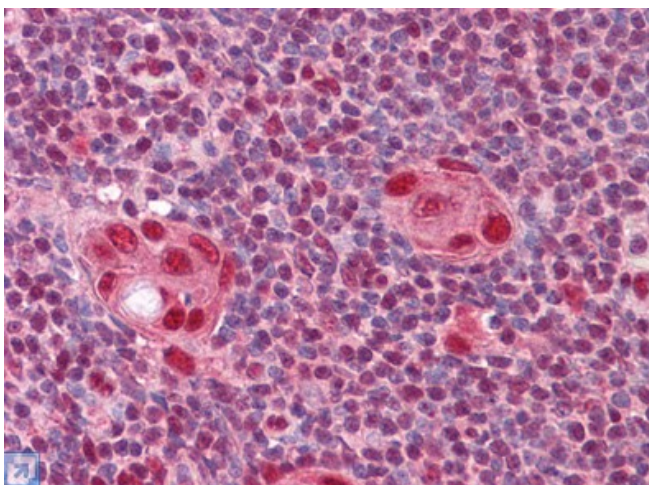
Western Blot analysis of CUX1 expression in transfected 293T cell line by CUTL1 monoclonal antibody, clone 2A10. Lane 1: Transfected cell lysate Lane 2: Non-transfected lysate



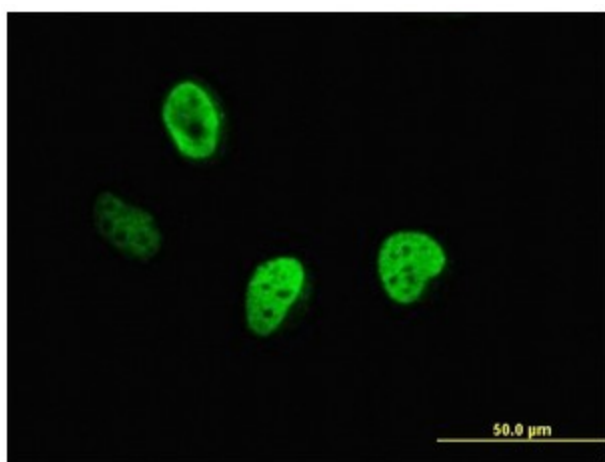
Detection limit for recombinant GST tagged CUTL1 is approximately 0.03 ng/ml as a capture antibody.



Human Spleen: Formalin-Fixed, Paraffin-Embedded (FFPE)



Human Thymus: Formalin-Fixed, Paraffin-Embedded (FFPE)



Immunofluorescence of monoclonal antibody to CUTL1 on HeLa cell (antibody concentration 10 ug/ml).