

Product datasheet for **AM20874PU-N**

Cellular Apoptosis Susceptibility (CSE1L) Mouse Monoclonal Antibody [Clone ID: 3F8]

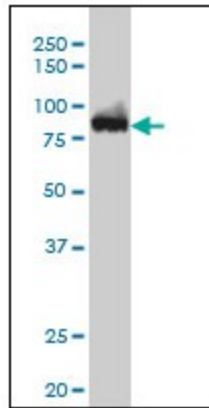
Product data:

Product Type:	Primary Antibodies
Clone Name:	3F8
Applications:	ELISA, IF, IHC, WB
Recommended Dilution:	ELISA. Immunofluorescence: 10 µg/ml. Immunohistochemistry on Paraffin Sections: 5 µg/ml. Western Blot.
Reactivity:	Human
Host:	Mouse
Isotype:	IgG1
Clonality:	Monoclonal
Immunogen:	Recombinant protein, CSE1L (NP_001307, 872 a.a. ~ 972 a.a) partial recombinant protein with GST tag. MW of the GST tag alone is 26 KDa.
Specificity:	This antibody reacts to Chromosome Segregation Gene Homolog Cas (CSE1L).
Formulation:	PBS, pH 7.2 State: Liquid purified Ig fraction
Concentration:	lot specific
Purification:	Protein A Chromatography
Conjugation:	Unconjugated
Storage:	Store the antibody at -20°C. Avoid repeated freezing and thawing.
Stability:	Shelf life: one year from despatch.
Gene Name:	chromosome segregation 1 like
Database Link:	Entrez Gene 1434 Human P55060
Synonyms:	Exp2, CSE1L, CAS
Protein Families:	Druggable Genome

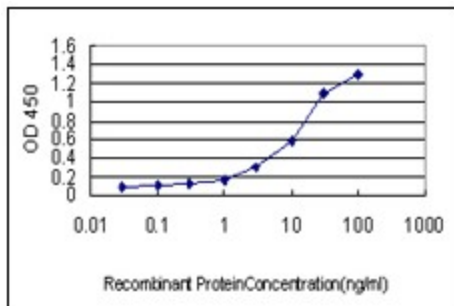


[View online »](#)

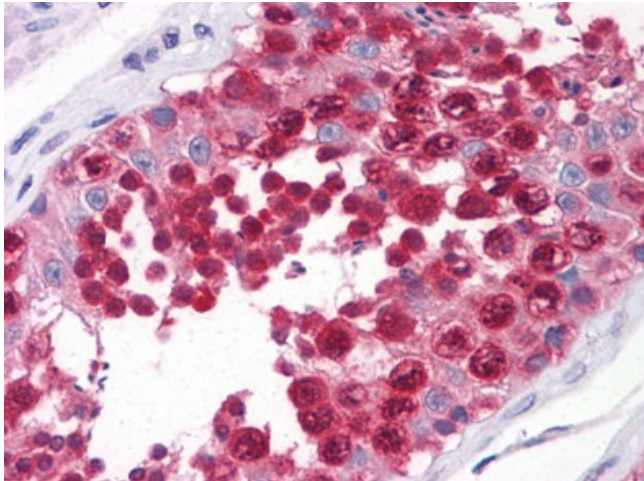
Product images:



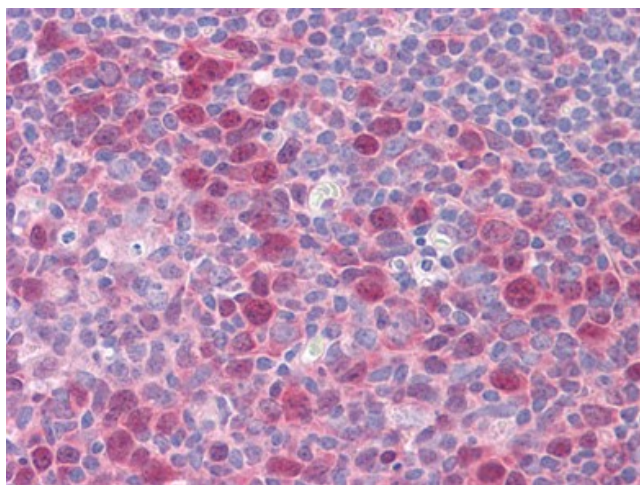
CSE1L monoclonal antibody, clone 3F8 Western Blot analysis of CSE1L expression in K-562.



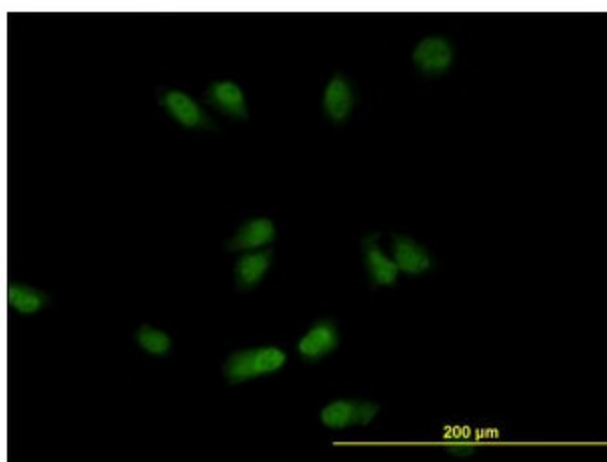
Detection limit for recombinant GST tagged CSE1L is approximately 0.1 ng/ml as a capture antibody.



Human Testis: Formalin-Fixed, Paraffin-Embedded (FFPE)



Human Tonsil: Formalin-Fixed, Paraffin-Embedded (FFPE)



Immunofluorescence of monoclonal antibody to CSE1L on HeLa cell (antibody concentration 10 ug/ml).