

Product datasheet for **AM20873PU-N**

mu Crystallin (CRYM) Mouse Monoclonal Antibody [Clone ID: 6B3]

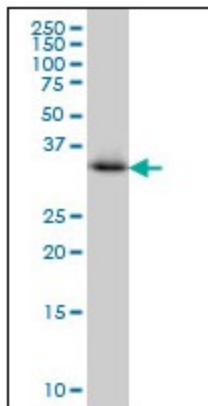
Product data:

Product Type:	Primary Antibodies
Clone Name:	6B3
Applications:	ELISA, IHC, WB
Recommended Dilution:	ELISA. Immunohistochemistry on Paraffin Sections: 5 µg/ml. Western Blot.
Reactivity:	Human
Host:	Mouse
Isotype:	IgG1
Clonality:	Monoclonal
Immunogen:	Recombinant protein, CRYM (NP_001879, 215 a.a. ~ 315 a.a) partial recombinant protein with GST tag. MW of the GST tag alone is 26 KDa.
Specificity:	This antibody reacts to Mu-crystallin Homolog (CRYM).
Formulation:	PBS, pH 7.2 State: Liquid purified Ig fraction
Concentration:	lot specific
Purification:	Protein A Chromatography
Conjugation:	Unconjugated
Storage:	Store the antibody at -20°C. Avoid repeated freezing and thawing.
Stability:	Shelf life: one year from despatch.
Gene Name:	crystallin mu
Database Link:	Entrez Gene 1428 Human Q14894
Synonyms:	THBP, CRYM

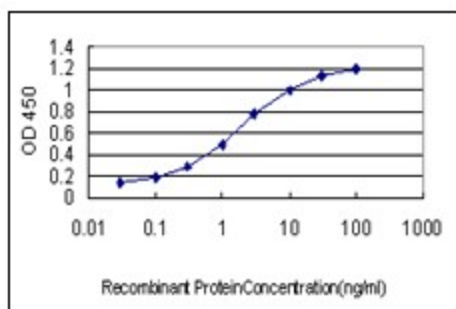


[View online »](#)

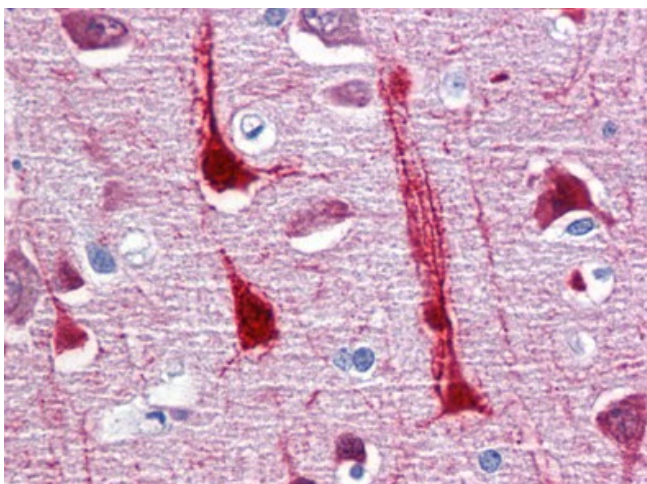
Product images:



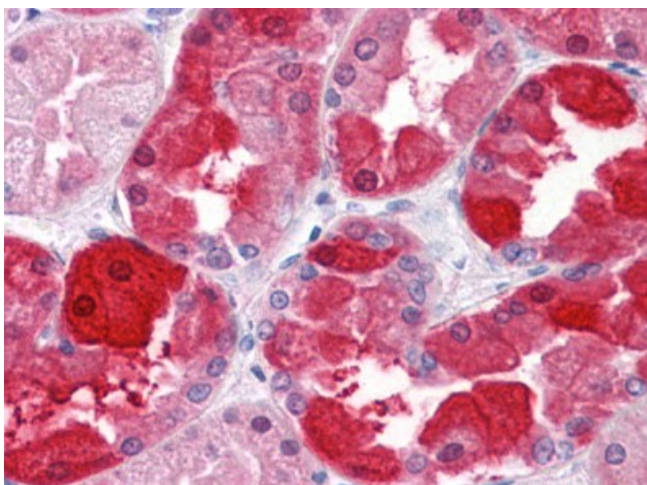
CRYM monoclonal antibody clone 6B3 Western Blot analysis of CRYM expression in Jurkat.



Detection limit for recombinant GST tagged CRYM is approximately 0.03 ng/ml as a capture antibody.



Human Brain, cortex: Formalin-Fixed, Paraffin-Embedded (FFPE)



Human Kidney: Formalin-Fixed, Paraffin-Embedded (FFPE)