

Product datasheet for **AM20871PU-N**

CLIC1 Mouse Monoclonal Antibody [Clone ID: 3F9]

Product data:

Product Type:	Primary Antibodies
Clone Name:	3F9
Applications:	ELISA, IHC, WB
Recommended Dilution:	ELISA. Immunohistochemistry on Paraffin Sections: 5 µg/ml. Western Blot.
Reactivity:	Human
Host:	Mouse
Isotype:	IgG2a
Clonality:	Monoclonal
Immunogen:	Recombinant protein, CLIC1 (AAH64527, 1 a.a. ~ 242 a.a) full length recombinant protein with GST tag. MW of the GST tag alone is 26 KDa.
Specificity:	This antibody reacts to Chloride Intracellular Channel 1 (CLIC1).
Formulation:	PBS, pH 7.2 State: Liquid purified Ig fraction
Concentration:	lot specific
Purification:	Protein A Chromatography
Conjugation:	Unconjugated
Storage:	Store the antibody at -20°C. Avoid repeated freezing and thawing.
Stability:	Shelf life: one year from despatch.
Gene Name:	chloride intracellular channel 1
Database Link:	Entrez Gene 1192 Human O00299



[View online »](#)

Background:

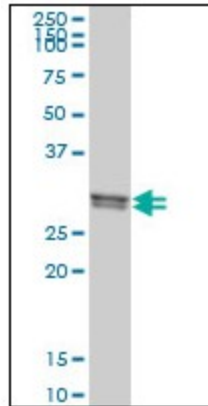
Chloride channels are a diverse group of proteins that regulate fundamental cellular processes including stabilization of cell membrane potential, transepithelial transport, maintenance of intracellular pH, and regulation of cell volume. Chloride intracellular channel 1 is a member of the p64 family; the protein localizes principally to the cell nucleus and exhibits both nuclear and plasma membrane chloride ion channel activity.

Synonyms:

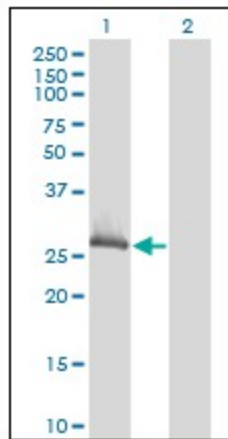
NCC27, Chloride channel ABP, hRNCC

Protein Families:

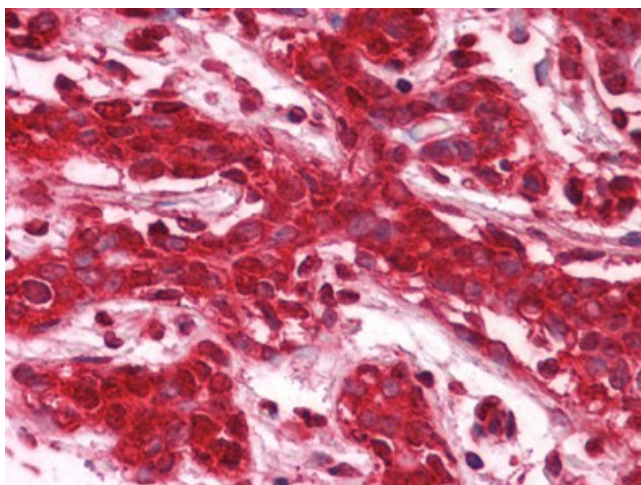
Druggable Genome, Ion Channels: Other

Product images:


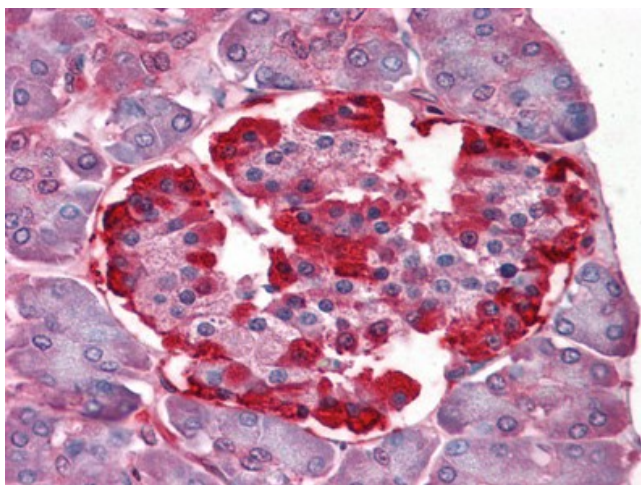
CLIC1 monoclonal antibody, clone 3F9 Western Blot analysis of CLIC1 expression in 293T.



Western Blot analysis of CLIC1 expression in transfected 293T cell line by CLIC1 monoclonal antibody, clone 3F9.



Human Breast: Formalin-Fixed, Paraffin-Embedded (FFPE)



Human Pancreas: Formalin-Fixed, Paraffin-Embedded (FFPE)