

## Product datasheet for **AM20868PU-N**

### **CDH18 (467-577) Mouse Monoclonal Antibody [Clone ID: 6F7]**

#### **Product data:**

Product Type:	Primary Antibodies
Clone Name:	6F7
Applications:	ELISA, IHC, WB
Recommended Dilution:	<b>ELISA.</b> <b>Immunohistochemistry on Paraffin Sections:</b> 5 µg/ml. <b>Western Blot.</b>
Reactivity:	Human
Host:	Mouse
Isotype:	IgG2a
Clonality:	Monoclonal
Immunogen:	CDH18 (NP_004925, 467 a.a. ~ 577 a.a) partial recombinant protein with GST tag
Specificity:	This antibody reacts to Cadherin 18, Type 2 (CDH18), aa 467-577.
Formulation:	PBS, pH 7.4 State: Liquid purified Ig fraction
Concentration:	lot specific
Purification:	Protein A Chromatography
Conjugation:	Unconjugated
Storage:	Upon receipt, store undiluted (in aliquots) at -20°C. Avoid repeated freezing and thawing.
Stability:	Shelf life: one year from despatch.
Gene Name:	cadherin 18
Database Link:	<a href="#">Entrez Gene 1016 Human Q13634</a>



[View online »](#)

**Background:**

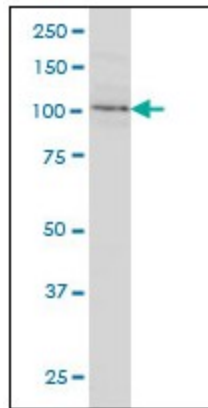
CDH18 / Ey-Cadherin is a type II classical cadherin from the cadherin superfamily of integral membrane proteins that mediate calcium-dependent cell-cell adhesion. Mature cadherin proteins are composed of a large N-terminal extracellular domain, a single membrane-spanning domain, and a small, highly conserved C-terminal cytoplasmic domain. Type II (atypical) cadherins are defined based on their lack of a HAV cell adhesion recognition sequence specific to type I cadherins.

**Synonyms:**

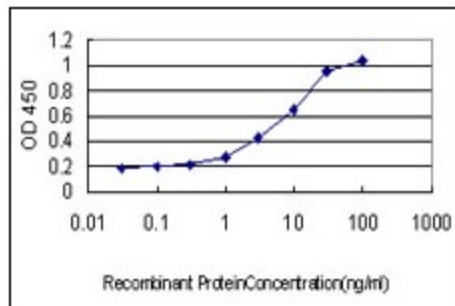
CDH18, CDH14, EY-Cadherin

**Protein Families:**

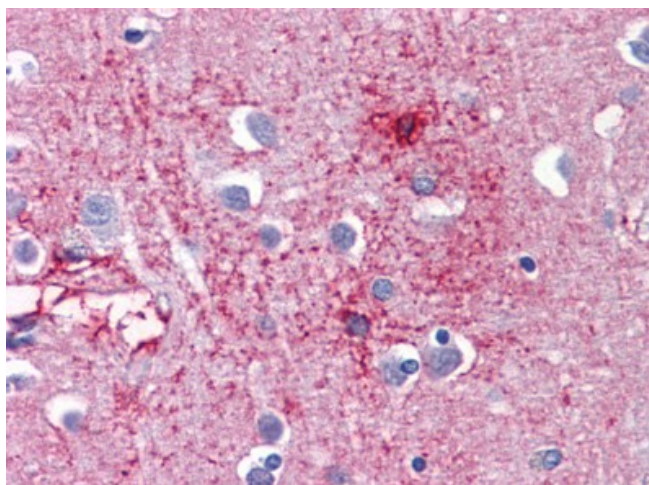
Transmembrane

**Product images:**


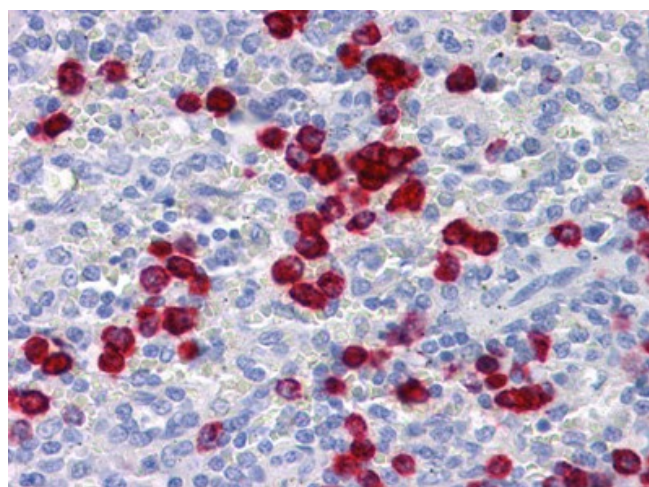
CDH18 monoclonal antibody, clone 6F7 Western Blot analysis of CDH18 expression in HeLa.



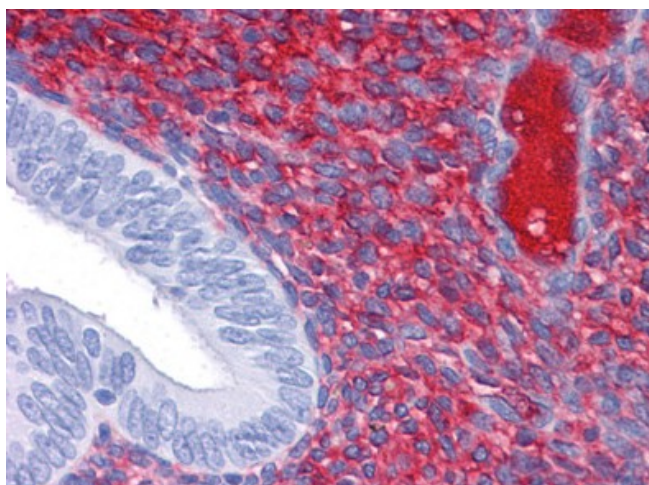
Detection limit for recombinant GST tagged CDH18 is approximately 0.1 ng/ml as a capture antibody.



Human Brain, cortex: Formalin-Fixed, Paraffin-Embedded (FFPE)



Human Spleen: Formalin-Fixed, Paraffin-Embedded (FFPE)



Human Uterus: Formalin-Fixed, Paraffin-Embedded (FFPE)