

Product datasheet for **AM20867PU-N**

E Cadherin (CDH1) Mouse Monoclonal Antibody [Clone ID: 3F4]

Product data:

Product Type:	Primary Antibodies
Clone Name:	3F4
Applications:	ELISA, IF, IHC, PLA, WB
Recommended Dilution:	ELISA. Immunohistochemistry on Paraffin Sections: 3 µg/ml. PLA. Western Blot.
Reactivity:	Human
Host:	Mouse
Isotype:	IgG1
Clonality:	Monoclonal
Immunogen:	Recombinant protein, CDH1 (NP_004351, 381 a.a. ~ 481 a.a) partial recombinant protein with GST tag. MW of the GST tag alone is 26 KDa.
Specificity:	This antibody reacts to Cadherin 1, Type 1, E-cadherin (epithelial) (CDH1).
Formulation:	PBS, pH 7.2 State: Purified State: Liquid purified Ig fraction
Concentration:	lot specific
Purification:	Protein A Chromatography
Conjugation:	Unconjugated
Storage:	Store the antibody at -20°C. Avoid repeated freezing and thawing.
Stability:	Shelf life: one year from despatch.
Gene Name:	cadherin 1
Database Link:	Entrez Gene 999 Human P12830



[View online »](#)

Background:

E Cadherin (CDH1) is a classical cadherin from the cadherin superfamily. It is a calcium dependent cell-cell adhesion glycoprotein composed of five extracellular cadherin repeats, a transmembrane region and a highly conserved cytoplasmic tail. Mutations in this gene are correlated with gastric, breast, colorectal, thyroid and ovarian cancer. Loss of function is thought to contribute to progression in cancer by increasing proliferation, invasion, and/or metastasis. The ectodomain of this protein mediates bacterial adhesion to mammalian cells and the cytoplasmic domain is required for internalization. Identified transcript variants arise from mutation at consensus splice sites.

Synonyms:

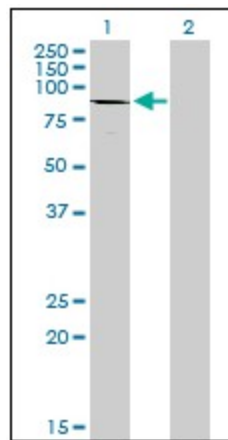
Epithelial cadherin, E-cadherin, Uvomorulin, CAM 120/80, CDH1, CDHE, UVO

Protein Families:

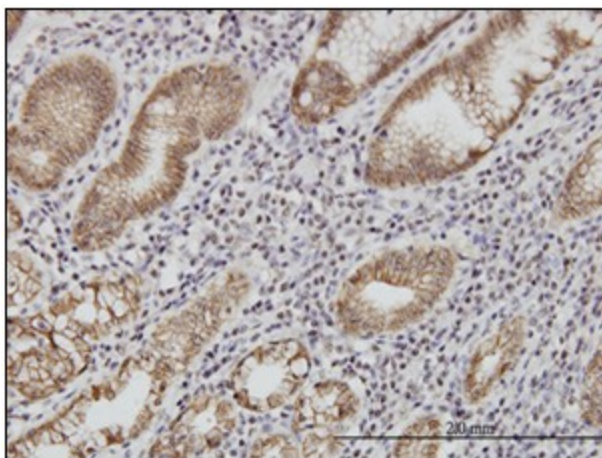
Druggable Genome, ES Cell Differentiation/IPS, Transmembrane

Protein Pathways:

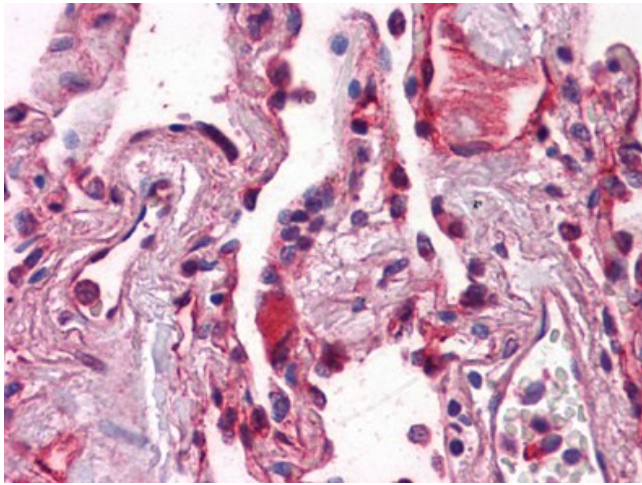
Adherens junction, Bladder cancer, Cell adhesion molecules (CAMs), Endometrial cancer, Melanoma, Pathogenic Escherichia coli infection, Pathways in cancer, Thyroid cancer

Product images:


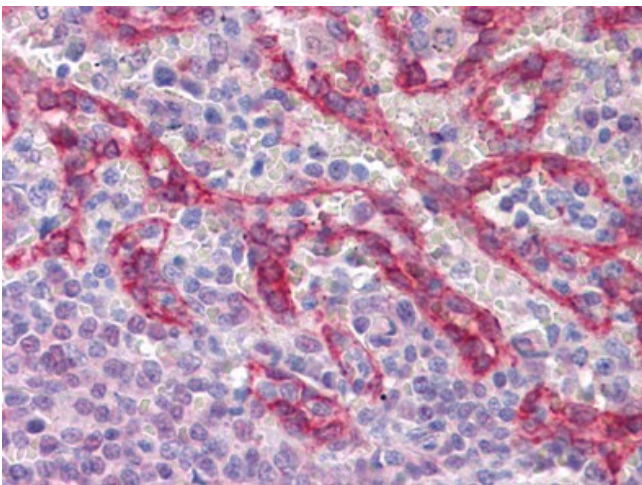
Western Blot analysis of CDH1 expression in transfected 293T cell line by CDH1 monoclonal antibody, clone 3F4.



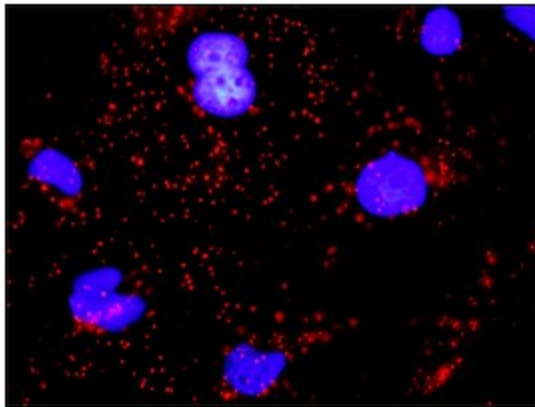
Immunoperoxidase of monoclonal antibody to CDH1 on formalin-fixed paraffin-embedded human stomach (antibody concentration 3 ug/ml). Formalin-Fixed, Paraffin-Embedded Human Stomach stained with CD324 / Cadherin-1 Antibody (Clone 3F4) at 3 ug/ml.



Formalin-Fixed, Paraffin-Embedded Human Lung stained with CD324 / Cadherin-1 Antibody (Clone 3F4) at 3 ug/ml after heat-induced antigen retrieval.



Formalin-Fixed, Paraffin-Embedded Human Spleen stained with CD324 / Cadherin-1 Antibody (Clone 3F4) at 3 ug/ml after heat-induced antigen retrieval.



Proximity Ligation Analysis (PLA) of protein-protein interactions between EGFR and CDH1 HeLa cells were stained with anti-EGFR rabbit purified polyclonal 1/1200 and anti-CDH1 mouse monoclonal antibody 1/50.