

Product datasheet for **AM20839PU-N**

GFP Mouse Monoclonal Antibody [Clone ID: GFP. C2]

Product data:

| | |
|-----------------------|---|
| Product Type: | Primary Antibodies |
| Clone Name: | GFP. C2 |
| Applications: | ELISA, IP, WB |
| Recommended Dilution: | ELISA. Western Blot (ECL): 1/1000 for 1 hour at RT. Dot Blot. Immunoprecipitation. |
| Host: | Mouse |
| Isotype: | IgG1 |
| Clonality: | Monoclonal |
| Immunogen: | GFP from the jellyfish Aequorea Victoria N-terminal peptide-KLH conjugates. |
| Specificity: | Recognizes native and denatured forms of GFP and its variants EGFP, YFP,EYFP, and CFP. Sensitivity: 1-10 ng of purified GFP or GFP fusion proteins (Western blot developed with ECL). |
| Formulation: | 10mM PBS, PH 7.2 with 0.09% Sodium Azide as preservative State: Aff - Purified State: Liquid purified Ig fraction |
| Concentration: | lot specific |
| Conjugation: | Unconjugated |
| Storage: | Store undiluted at 2-8°C for one month or (in aliquots) at -20°C for longer. Avoid repeated freezing and thawing. |
| Stability: | Shelf life: one year from despatch. |



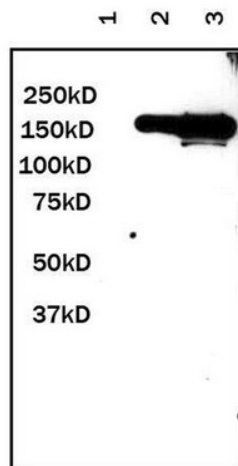
[View online »](#)

Background:

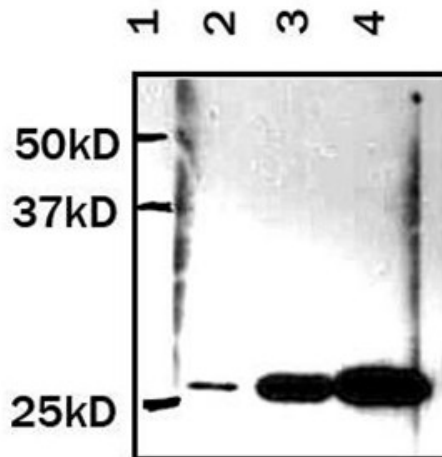
The green fluorescent protein (GFP) was originally identified as a protein involved in the bioluminescence of the jellyfish *Aequorea victoria*. GFP cDNA produces a fluorescent product when expressed in prokaryotic cells, without the need for exogenous substrates or cofactors, making GFP a useful tool for monitoring gene expression and protein localization in vivo. Several GFP mutants have been developed, including EGFP, which fluoresce more intensely than the wild type GFP and have shifted excitation maxima, making them useful for FACS and fluorescence microscopy as well as double-labeling applications. GFP is widely used in expression vectors as a fusion protein tag, allowing expression and monitoring of heterologous proteins fused to GFP.

Synonyms:

Yellow Fluorescent Protein

Product images:


Lane 1: Negative Control. Lane 2: 1 g GFP Fusion Protein Lysate Lane 3: 10 g GFP Fusion Protein Lysate



Antibody working Cont: 1/1000 from 1 mg/ ml stock Cont.