

Product datasheet for **AM20837PU-N**

RFP-Tag Mouse Monoclonal Antibody [Clone ID: RFP. H8]

Product data:

Product Type:	Primary Antibodies
Clone Name:	RFP. H8
Applications:	IP, WB
Recommended Dilution:	Immunoprecipitation. Dot Blot. Western Blot: Use at 1/1,000 for 1 hour at room temperature using ECL development. Sensitivity: 1-10 ng of purified RFP or RFP fusion proteins (Western blot developed with ECL).
Host:	Mouse
Isotype:	IgG1
Clonality:	Monoclonal
Immunogen:	RFP from Discosoma and anemone N-terminal peptide-KLH conjugates.
Specificity:	This antibody recognizes native and denatured forms of RFP and its variants tag-RFP, turbo-RFP, DeRed, mCherry and mOrange.
Formulation:	10mM PBS, PH 7.2 with 0.09% Sodium Azide as preservative State: Aff - Purified State: Liquid purified Ig fraction
Concentration:	lot specific
Conjugation:	Unconjugated
Storage:	Store the antibody undiluted at 2-8°C for one month or (in aliquots) at -20°C for longer. Avoid repeated freezing and thawing.
Stability:	Shelf life: one year from despatch.
Database Link:	Q9U6Y8



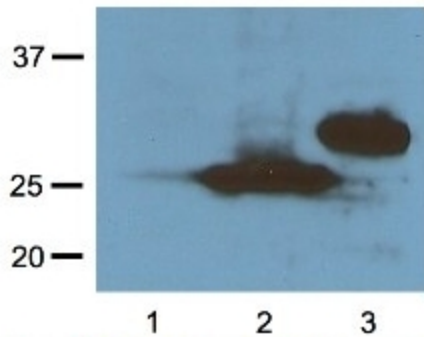
[View online »](#)

Background:

Fluorescent proteins (FP) are powerful tools to study protein localization and dynamics in living cells. In addition to the prominent green fluorescent protein (GFP) from *Aequorea victoria*, a red fluorescent protein (DsRed) was discovered in the coral *Discosoma* sp. Mutagenesis of the red progenitor has resulted in several monomeric red FPs (mRFP1, mCherry, mOrange, mPlum, etc) which become attractive tools for a number of applications. For example, the combination of green and red fusion proteins allows multicolor tracking as well as protein-protein interaction studies in living cells.

Synonyms:

Red fluorescent protein Tag, DsRed Tag

Product images:

RFP Monoclonal Antibody dilution at 1/100 (1 g/ml) probed against HEK293 cells transfected with RFP-tagged protein vector. Lane 1: Untransfected Control. Lane 2: Transfected with Turbo-RFP. Lane 3: Transfected with DeRed