

Product datasheet for **AM20829HR-S**

Rat IgG Light Chain Mouse Monoclonal Antibody [Clone ID: KT100]

Product data:

Product Type:	Secondary Antibodies
Product Name:	Rat IgG Light Chain Mouse Monoclonal Antibody [Clone ID: KT100]
Clone Name:	KT100
Applications:	ELISA, WB
Recommended Dilution:	ELISA: 1/3000. Western blot: 1/1000 (DAB as substrate) and 1/10000 (ECL system).
Reactivity:	Rat
Host:	Mouse
Immunogen:	Rat IgG
Isotype:	IgG2b
Formulation:	PBS containing 0.01% Thimerosal as a preservative Label: HRP State: Liquid purified IgG fraction Label: Horseradish Peroxidase
Concentration:	lot specific
Purification:	Protein A Chromatography
Conjugation:	HRP
Storage:	Store the antibody undiluted at 2-8°C for one month or (in aliquots) at -20°C to -80°C for longer. Avoid repeated freezing and thawing.



[View online »](#)

Product images:

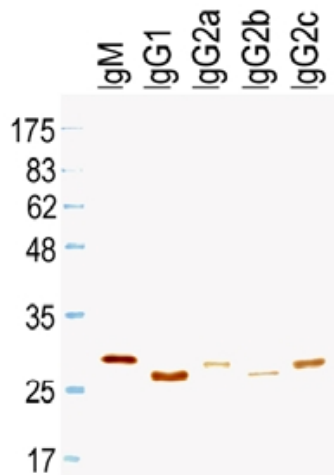


Figure 2. Western blotting to Rat Immunoglobulins under reducing condition detected by HRP conjugated KT100.

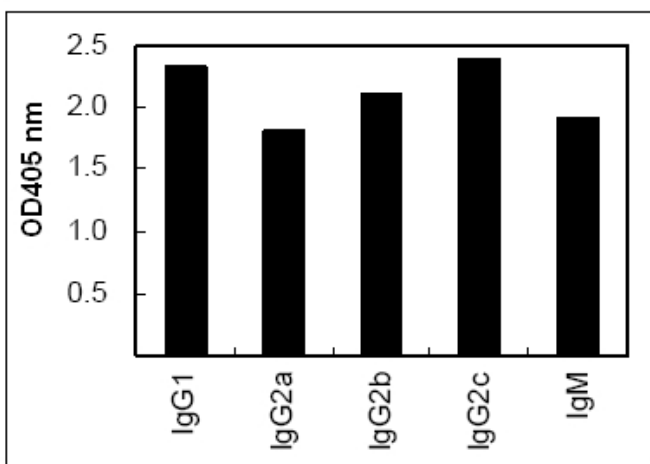


Figure 1. ELISA using Rat immunoglobulins as primary antibodies and HRP conjugated KT100 as secondary antibody.