

## Product datasheet for **AM20829HR-N**

### Rat IgG Light Chain Mouse Monoclonal Antibody [Clone ID: KT100]

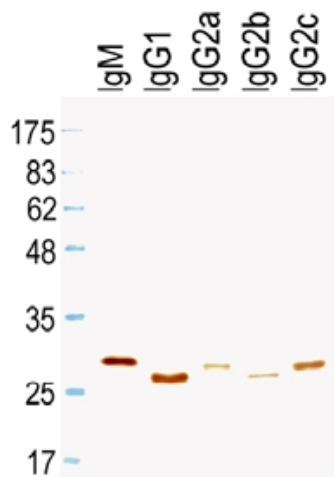
#### Product data:

Product Type:	Secondary Antibodies
Product Name:	Rat IgG Light Chain Mouse Monoclonal Antibody [Clone ID: KT100]
Clone Name:	KT100
Applications:	ELISA, WB
Recommended Dilution:	ELISA: 1/3000. Western blot: 1/1000 (DAB as substrate) and 1/10000 (ECL system).
Reactivity:	Rat
Host:	Mouse
Immunogen:	Rat IgG
Isotype:	IgG2b
Formulation:	PBS containing 0.01% Thimerosal as a preservative Label: HRP State: Liquid purified IgG fraction Label: Horseradish Peroxidase
Concentration:	lot specific
Purification:	Protein A Chromatography
Conjugation:	HRP
Storage:	Store the antibody undiluted at 2-8°C for one month or (in aliquots) at -20°C to -80°C for longer. Avoid repeated freezing and thawing.

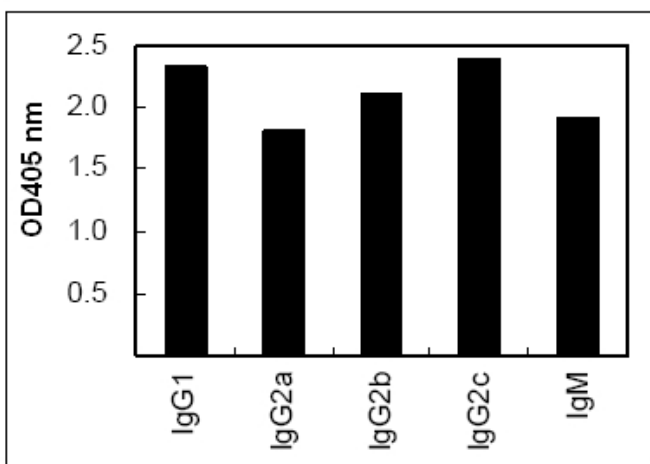


[View online »](#)

Product images:



**Figure 2.** Western blotting to Rat Immunoglobulins under reducing condition detected by HRP conjugated KT100.



**Figure 1.** ELISA using Rat immunoglobulins as primary antibodies and HRP conjugated KT100 as secondary antibody.