

## Product datasheet for **AM20783PU-N**

### HA Epitope Tag (YPYDVPDYA) Mouse Monoclonal Antibody [Clone ID: 26D11]

#### Product data:

Product Type:	Primary Antibodies
Clone Name:	26D11
Applications:	ELISA, IF, IP, WB
Recommended Dilution:	<b>ELISA:</b> 1/2000. <b>Western blot:</b> 1/5000. Incubate membrane with diluted antibody in 5% w/v nonfat dry milk, 1 TBS, 0.05% Tween-20 at 4°C with gentle shaking, overnight. <b>Immunoprecipitation:</b> 1/100. <b>Immunofluorescence:</b> 1/1000.
Reactivity:	All Species, Human
Host:	Mouse
Isotype:	IgG1
Clonality:	Monoclonal
Immunogen:	Synthetic peptide containing the Influenza Hemagglutinin epitope (YPYDVPDYA) (KLH-coupled).
Specificity:	This antibody detects over-expressed proteins containing the HA epitope tag.
Formulation:	State: Aff - Purified State: Liquid purified Ig fraction
Conjugation:	Unconjugated
Storage:	Store the antibody undiluted at 2-8°C for one month or (in aliquots) at -20°C for longer. Avoid repeated freezing and thawing.
Stability:	Shelf life: one year from despatch.



[View online »](#)

**Background:**

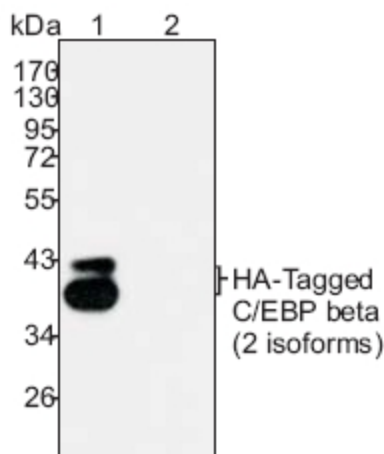
Plasmid vectors for the expression of coding regions of eukaryotic genes in bacterial, insect and mammalian hosts are in common usage; such expression vectors are frequently used to encode hybrid fusion proteins consisting of a eukaryotic target protein and a specialized region designed to aid in the purification and visualization of the target protein. For example, the pCDM8 expression vector and derivatives thereof encode fusions between the target protein and an 11 amino acid peptide derived from the influenza protein hemagglutinin (HA). The HA epitope tag is useful in Western blotting and immunohistochemical localization of expressed fusion proteins when examined with antibodies raised specifically against the HA-epitope tag.

**Synonyms:**

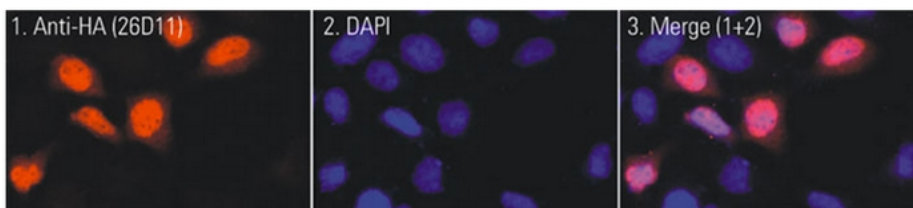
Hemagglutinin Tag, HA-Tag, HA Tag

**Note:**

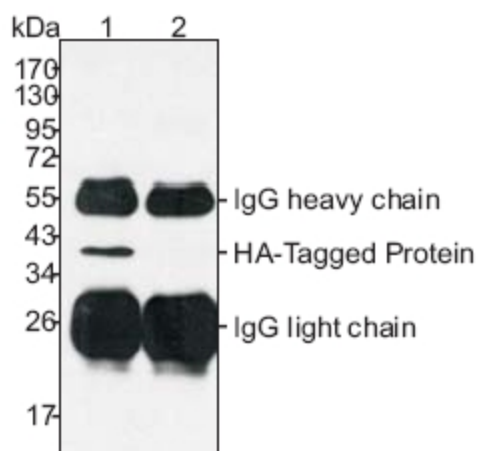
Use an anti-Mouse secondary antibody to detect the 26D11 antibody.

**Product images:**


Western blot analysis of 293T cells transfected (Lane 1) with a HA-tagged protein and a mock transfected (Lane 2, using the same protein without the HA tag), using HA-Tag (26D11) Mouse Monoclonal Antibody at a 1/5000 dilution. Each lane was loaded with 10



Immunofluorescence analysis of 293T cells transfected with a HA-tagged protein, using HA-Tag (26D11) Mouse Monoclonal Antibody at a 1/1000 dilution.



Immunoprecipitation of extracts from 293T cells transfected (Lane 1) with a HA-tagged protein and a mock transfection (Lane 2, using the same protein without the HA tag), using HA-Tag (26D11) Mouse Monoclonal Antibody and probed on Western blot using the s