

## Product datasheet for **AM20779PU-L**

### GST-Tag Mouse Monoclonal Antibody [Clone ID: 12G8]

#### Product data:

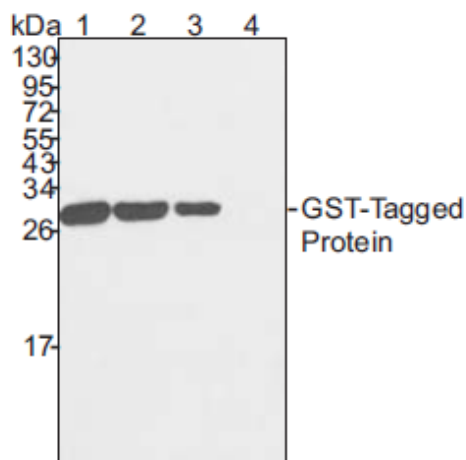
Product Type:	Primary Antibodies
Clone Name:	12G8
Applications:	ELISA, WB
Recommended Dilution:	<b>Western Blot:</b> 1/5000. Incubate membrane with diluted antibody in 5% w/v nonfat dry milk, 1 TBS, 0.05% Tween-20 at 4°C with gentle shaking, overnight. <b>ELISA:</b> 1/2000.
Reactivity:	All Species, Human, Mouse, Rat
Host:	Mouse
Isotype:	IgG1
Clonality:	Monoclonal
Immunogen:	This monoclonal antibody is produced by immunizing animals with full-length GST.
Specificity:	This GST-Tag Antibody (12G8) Mouse mAb detects GST and GST fusion proteins.
Formulation:	State: Aff - Purified State: Liquid purified Ig fraction
Conjugation:	Unconjugated
Storage:	Store the antibody undiluted at 2-8°C for one month or (in aliquots) at -20°C for longer. Avoid repeated freezing and thawing.
Stability:	Shelf life: one year from despatch.
Database Link:	<a href="#">P08515</a>
Background:	Plasmid vectors for the expression of coding regions of eukaryotic genes in E.coli are in common usage; such expression vectors often encode hybrid fusion proteins containing part prokaryotic and part eukaryotic specified proteins. For instance, the pGEX.3X expression vector developed by Smith and Johnson allows for synthesis of fusion proteins between glutathionine-S-transferase (GST) and proteins encoded by inserted cDNA sequences. Antibodies derived from these GST fusion proteins are useful for checking protein expression both in plaques and on Western blots as well as for immunoaffinity purification of proteins expressed in E. Coli.



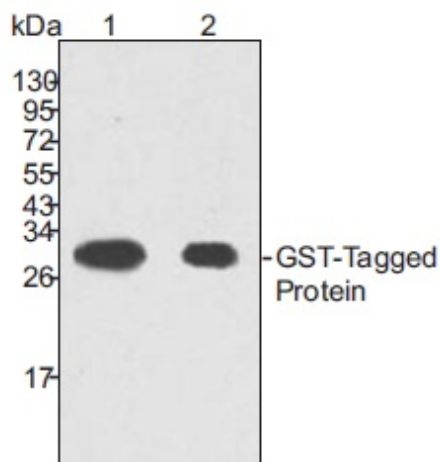
[View online »](#)

Synonyms: Glutathione S-transferase Tag, GST26-Tag

### Product images:



12G8 can specifically detect 1 ng of recombinant protein. There is 6 ng, 3 ng, 1 ng, and 0 ng GSTtagged recombinant protein in lanes 1-4, respectively. The 12G8 antibody dilution is 1/5000.



Western blot analysis of recombinant GST-tagged protein, using GST-tag (12G8) Mouse mAb. The antibody dilutions are 1/5000 (lane 1) and 1/10000 (lane 2).