

## Product datasheet for **AM20711PU-S**

### DYKDDDDK Epitope Tag Mouse Monoclonal Antibody [Clone ID: G191]

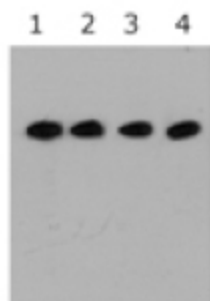
#### Product data:

Product Type:	Primary Antibodies
Clone Name:	G191
Applications:	IF, IP, WB
Recommended Dilution:	Western Blot: 1/1000-1/4000. Immunoprecipitation : 1/200. Immunofluorescence : 1/100.
Reactivity:	All Species
Host:	Mouse
Isotype:	IgG2b
Clonality:	Monoclonal
Immunogen:	A synthetic peptide (DYKDDDDK) coupled to KLH.
Specificity:	This antibody Recognizes over-expressed proteins containing DYKDDDDK epitope tag fused to either amino-or carboxy-termini of targeted proteins in transfected mammalian cells.
Formulation:	PBS (pH 7.2) with 50% Glycerol State: Aff - Purified State: Liquid purified Ig fraction
Concentration:	lot specific
Conjugation:	Unconjugated
Storage:	Store the antibody undiluted at 2-8°C for one month or (in aliquots) at -20°C for longer. Avoid repeated freezing and thawing.
Stability:	Shelf life: one year from despatch.
Background:	Epitope tags are useful for the labeling and detection of proteins using immunoblotting, immunoprecipitation and immunostaining techniques. Due to their small size, they are unlikely to affect the tagged protein's biochemical properties. The DYKDDDDK peptide has been used extensively as a general epitope tag in expression vectors. This peptide can be expressed and detected with the protein of interest as an amino-terminal or carboxy-terminal fusion.
Synonyms:	FLAG Epitope Tag, ECS Epitope Tag, FLAG-tag, ECS-tag, D-tag

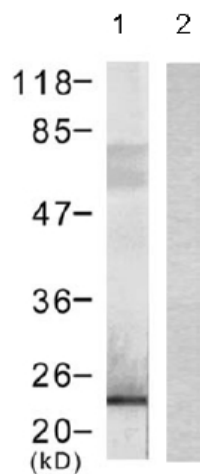


[View online »](#)

## Product images:



Western blot analysis of 293 cells transfected with D-tagged vectors at different concentrations of the anti-D antibody. Lane 1: Highest concentration (0.5 mg/ml). Lane 4: Lowest concentration at (0.1 g/ml).



Western blot analysis of extract from 293 cells transfected with (Lane 1) or without (Lane 2) Flag-tagged Bad using Flag-Tag monoclonal Antibody Cat.-No [AM20711PU-N]/PU-S