

Product datasheet for **AM20709PU-N**

beta Actin (ACTB) (Loading Control) Mouse Monoclonal Antibody [Clone ID: G043]

Product data:

Product Type:	Primary Antibodies
Clone Name:	G043
Applications:	IF, WB
Recommended Dilution:	Western blot (1/1,000-1/4,000) Immunofluorescence (1/00). It is very useful as a Loading Control for quantitative western blotting.
Reactivity:	All Species
Host:	Mouse
Isotype:	IgG1
Clonality:	Monoclonal
Immunogen:	KLH-coupled Beta-cytoplasmic Actin N-terminal peptide.
Specificity:	Recognize 43KDa beta-Actin from Human.
Formulation:	PBS, pH 7.4 containing 0.05% Sodium Azide as preservative. State: Aff - Purified State: Liquid purified IgG fraction.
Concentration:	lot specific
Purification:	Affinity Chromatography.
Conjugation:	Unconjugated
Storage:	Upon receipt, store undiluted (in aliquots) at -20°C. Avoid repeated freezing and thawing.
Stability:	Shelf life: one year from despatch.
Gene Name:	actin, beta
Database Link:	Entrez Gene 60 Human P60709



[View online »](#)

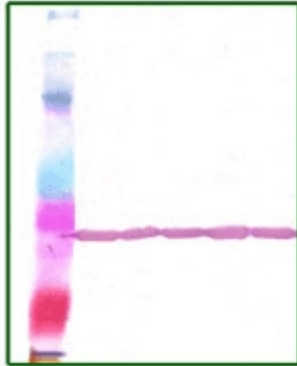
Background: Beta-actin is one of six different actin isoforms which have been identified. Actins are highly conserved proteins that are involved in cell motility, structure, and integrity. Because beta-actin is ubiquitously expressed in all eukaryotic cells, it is frequently used as a loading control for assays involving protein detection, such as Western blotting. Antibodies to beta-actin provide a specific and useful tool in studying the intracellular distribution of beta-actin and the static and dynamic aspects of the cytoskeleton.

Synonyms: Actin cytoplasmic 1, Beta-Actin

Protein Families: ES Cell Differentiation/IPS

Protein Pathways: Adherens junction, Arrhythmogenic right ventricular cardiomyopathy (ARVC), Dilated cardiomyopathy, Focal adhesion, Hypertrophic cardiomyopathy (HCM), Leukocyte transendothelial migration, Pathogenic Escherichia coli infection, Regulation of actin cytoskeleton, Tight junction, Vibrio cholerae infection, Viral myocarditis

Product images:



Western Blot analysis of Beta-Actin in 293 Clles. 20 ug of total cell lysates were bloted with Monoclonal Mouse anti beta-Actin antibody (G043).