

Product datasheet for **AM20708PU-N**

beta V Tubulin (TUBB) Mouse Monoclonal Antibody [Clone ID: A10]

Product data:

Product Type:	Primary Antibodies
Clone Name:	A10
Applications:	WB
Recommended Dilution:	ICC/IF, WB
Reactivity:	Dictyostelium, Human, Mouse
Host:	Mouse
Isotype:	IgG1
Clonality:	Monoclonal
Immunogen:	Recombinant beta-Tubulin protein from bacteria.
Specificity:	Recognize beta-Tubulin from Human, Mouse, Tetrahymena, dictyostelium, Saccharomyces. The antibody recognizes a 50kDa band in a Western Blot analysis.
Formulation:	PBS, pH 7.4 containing 0.05% Sodium Azide as preservative.
Concentration:	lot specific
Purification:	Affinity Chromatography.
Conjugation:	Unconjugated
Storage:	Store the antibody (in aliquots) at -20°C. Avoid repeated freezing and thawing. Shelf life: One year from despatch.
Predicted Protein Size:	49.5 kDa
Gene Name:	tubulin beta class I
Database Link:	NP_821133 Entrez Gene 203068 Human P07437
Background:	Tubulin is a major cytoskeleton component that has five distinct forms. α and β Tubulins form heterodimers which multimerize to form a microtubule filament. There are five beta Tubulin isoforms (beta-1, beta-2, beta-3, beta-4A and beta-4B) that are expressed in mammalian tissues. Beta-1 and beta-4 are present throughout the cytosol, beta-2 is present in the nuclei and nucleoplasm, and beta-3 is a neuron-specific cytoskeletal protein.



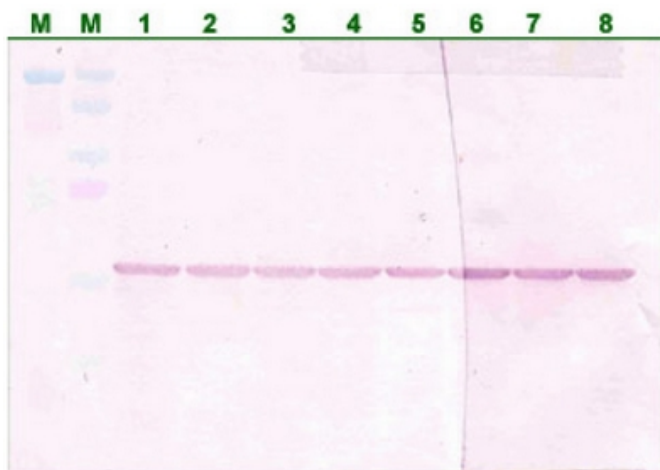
[View online »](#)

Synonyms: M40; MGC16435; MGC117247; OK/SW-cl.56; TUBB1; TUBB5

Protein Families: Druggable Genome

Protein Pathways: Gap junction, Pathogenic Escherichia coli infection

Product images:



Western Blot Analysis of 293 cell lysates with Mouse Monoclonal anti-beta-Tubulin antibody (Lane 1-8).