

Product datasheet for **AM20707PU-S**

c-Myc (MYC) Mouse Monoclonal Antibody [Clone ID: Myc.A7]

Product data:

Product Type:	Primary Antibodies
Clone Name:	Myc.A7
Applications:	IF, IP, WB
Recommended Dilution:	Western blot: 1/1,000/4,000. Immunoprecipitation. Immunocytochemistry/Immunofluorescence: 1/200-1/400.
Reactivity:	Mammalian
Host:	Mouse
Isotype:	IgG1
Clonality:	Monoclonal
Immunogen:	A synthetic peptide KLH conjugated (EQKLISEEDL) corresponding to amino acids 410-419 of transcription factor c-Myc.
Specificity:	Myc-tag Monoclonal Antibody recognises over-expressed proteins containing Myc epitope tag fused to either amino- or carboxy-termini of targeted proteins in transfected mammalian cells. Reacts with Human, Mouse, Rat and others.
Formulation:	PBS, pH 7.4 State: Aff - Purified State: Liquid purified IgG fraction Preservative: 0.05% Sodium Azide
Concentration:	lot specific
Purification:	Affinity Chromatography
Conjugation:	Unconjugated
Storage:	Upon receipt, store undiluted (in aliquots) at -20°C. Avoid repeated freezing and thawing.
Stability:	Shelf life: one year from despatch.
Gene Name:	v-myc avian myelocytomatosis viral oncogene homolog



[View online »](#)

Database Link: [Entrez Gene 4609 Human P01106](#)

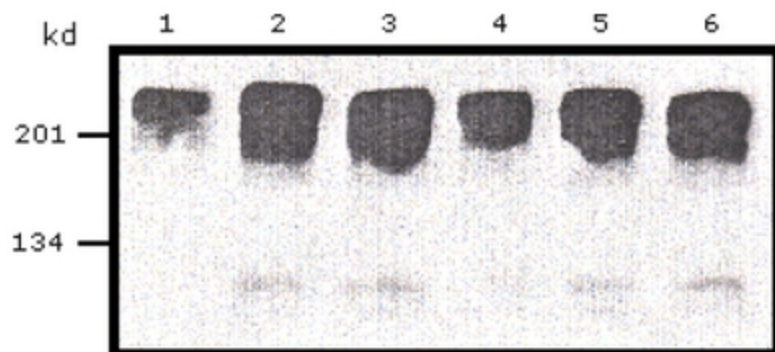
Background: Epitope tags are short peptide sequences that are easily recognized by tag-specific antibodies. Due to their small size, epitope tags do not affect the tagged protein's biochemical properties. Most often sequences encoding the epitope tag are included with target DNA at the time of cloning to produce fusion proteins containing the epitope tag sequence. This allows anti-epitope tag antibodies to serve as universal detection reagents for any tag containing protein produced by recombinant means. This means that anti-epitope tag antibodies are a useful alternative to generating specific antibodies to identify, immunoprecipitate or immunoaffinity purify a recombinant protein. The anti-epitope tag antibody is usually functional in a variety of antibody-dependent experimental procedures. Expression vectors producing epitope tag fusion proteins are available for a variety of host expression systems including bacteria, yeast, insect and mammalian cells.

Synonyms: myc tag, myc-tag, c-myc tag

Protein Families: Druggable Genome, Embryonic stem cells, Induced pluripotent stem cells, Stem cell - Pluripotency, Stem cell relevant signaling - JAK/STAT signaling pathway, Stem cell relevant signaling - TGFb/BMP signaling pathway, Stem cell relevant signaling - Wnt Signaling pathway, Transcription Factors

Protein Pathways: Acute myeloid leukemia, Bladder cancer, Cell cycle, Chronic myeloid leukemia, Colorectal cancer, Endometrial cancer, ErbB signaling pathway, Jak-STAT signaling pathway, MAPK signaling pathway, Pathways in cancer, Small cell lung cancer, TGF-beta signaling pathway, Thyroid cancer, Wnt signaling pathway

Product images:



Western blot analysis of Myc-tagged fusion construct under different conditions of transfection reagents and amount of fusion DNA construct.