

## Product datasheet for **AM20706PU-S**

### 6xHistidine Epitope Tag (HHHHHH) Mouse Monoclonal Antibody [Clone ID: HIS.H8]

#### Product data:

Product Type:	Primary Antibodies
Clone Name:	HIS.H8
Applications:	IF, IP, WB
Recommended Dilution:	<b>Western blot:</b> 1/1000-1/4000. <b>Immunoprecipitation:</b> 1/200-1/400. <b>Immunostaining:</b> 1/200-1/400.
Reactivity:	Mammalian
Host:	Mouse
Isotype:	IgG2b
Clonality:	Monoclonal
Immunogen:	Synthetic peptide (KLH-coupled) containing the His epitope 6x His (H-H-H-H-H-H).
Specificity:	His-tag monoclonal antibody recognizes His-tagged proteins overexpressed in cells, including both amino- or carboxy-termini of targeted proteins in transfected mammalian cells. Reacts with Human, Mouse, Rat and Others.
Formulation:	10mM PBS, pH 7.2 State: Aff - Purified State: Liquid purified IgG fraction Preservative: 0.05% Sodium Azide
Concentration:	lot specific
Purification:	Affinity Chromatography
Conjugation:	Unconjugated
Storage:	Upon receipt, store undiluted (in aliquots) at -20°C. Avoid repeated freezing and thawing.
Stability:	Shelf life: one year from despatch.



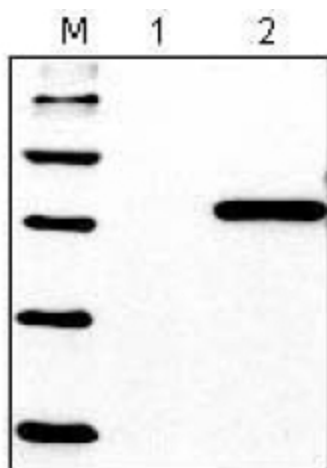
[View online »](#)

**Background:**

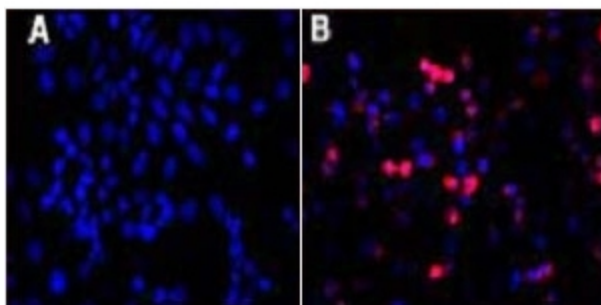
Expression vectors are frequently used to encode hybrid fusion proteins consisting of a eukaryotic target protein and a specialized region designed to aid in the purification and visualization of the target protein. A system that has proven to be very successful relies on the insertion of a six histidine (His6) sequence in the N-terminus of the encoded protein, allowing for efficient coupling to Ni<sup>++</sup>-chelating resins and purification by single step affinity chromatography. This polyhistidine sequence can then be removed by specific cleavage at sites recognized by enzymes such as thrombin or enterokinase, permitting the separation of the target protein from the polyhistidine tag. Visualization of such fusion proteins can be achieved by utilizing antibodies generated against specific peptide sequences downstream from the multiple cloning site.

**Synonyms:**

6xHis-Tag, His Tag, HIS6 Tag, HHHHHH Tag

**Product images:**

Western blot analysis using 6X His tag antibody of 293 cells transfected with His- Tagged vector (Lane 2) and untransfected control (Lane 1).



Immunofluorescence staining of His Tag fusion protein in 293 cells using His tag antibody. A: untransfected Control B: Transfected