

Product datasheet for **AM20689PU-N**

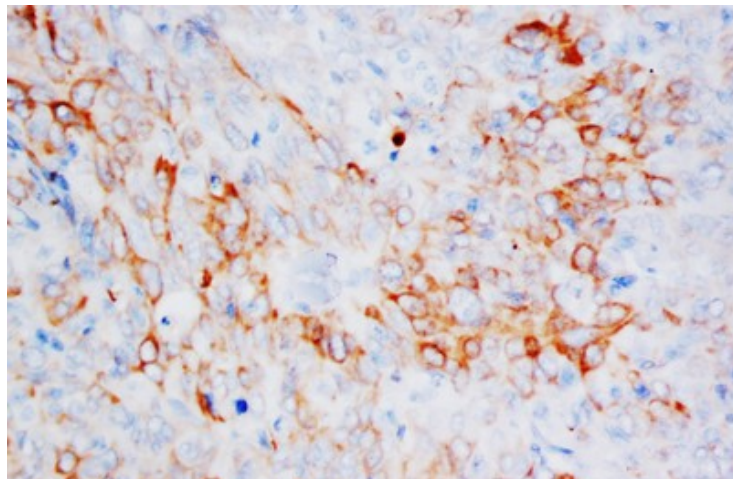
KRT13 Mouse Monoclonal Antibody [Clone ID: CK-13]

Product data:

Product Type:	Primary Antibodies
Clone Name:	CK-13
Applications:	IHC
Recommended Dilution:	Immunohistochemistry on paraffin sections: 2 - 4 µg/ml.
Reactivity:	Human
Host:	Mouse
Isotype:	IgG1
Clonality:	Monoclonal
Immunogen:	The cultured human epidermoid carcinoma cell line A-431.
Specificity:	This antibody reacts to Cytokeratin 13.
Formulation:	1.2 % sodium acetate, with 2 mg BSA and 0.01 mg sodium azide as preservative. State: Purified State: Lyophilized purified Ig fraction
Reconstitution Method:	Restore with 1.2% sodium acetate or neutral PBS
Concentration:	0,1 mg/ml (after reconstitution with PBS)
Purification:	Affinity chromatography
Conjugation:	Unconjugated
Storage:	Prior to reconstitution store at -20°C. Following reconstitution store undiluted at 2-8°C for one month or (in aliquots) at -20°C for longer. Avoid repeated freezing and thawing.
Stability:	Shelf life: one year from despatch.
Gene Name:	keratin 13
Database Link:	Entrez Gene 3860 Human P13646
Synonyms:	CK-13, CK13, Keratin-13, KRT13, K13, KRT-13



[View online »](#)

Product images:

Immunohistochemistry on paraffin sections:
Human Esophageal Squamous Cell Carcinoma