

Product datasheet for **AM20687PU-N**

beta Actin (ACTB) Mouse Monoclonal Antibody [Clone ID: AC-15]

Product data:

Product Type:	Primary Antibodies
Clone Name:	AC-15
Applications:	IHC, IP, WB
Recommended Dilution:	Western Blot: 0.25-0.5 µg/ml. Immunohistochemistry on Paraffin Sections: 0.5-1 µg/ml.
Reactivity:	Human, Mouse, Rat
Host:	Mouse
Isotype:	IgG1
Clonality:	Monoclonal
Immunogen:	Slightly modified beta-cytoplasmic actin N-terminal peptide, Ac-Asp-Asp-Asp-Ile-Ala-Ala-Leu-Val-Ile-Asp-Asn-Gly-Ser-Gly-Lys, conjugated to KLH.
Specificity:	This antibody reacts to Actin beta.
Formulation:	PBS State: Purified State: Liquid purified Ig fraction Preservative: 0.02% Sodium Azide
Reconstitution Method:	Restore with 1.2% sodium acetate or neutral PBS.
Concentration:	lot specific
Purification:	Affinity Chromatography
Conjugation:	Unconjugated
Storage:	Store undiluted at 2-8°C for one month or (in aliquots) at -20°C for longer. Avoid repeated freezing and thawing.
Stability:	Shelf life: one year from despatch.
Predicted Protein Size:	41.7 kDa
Gene Name:	actin, beta
Database Link:	Entrez Gene 11461 Mouse Entrez Gene 81822 Rat Entrez Gene 60 Human P60709



[View online »](#)

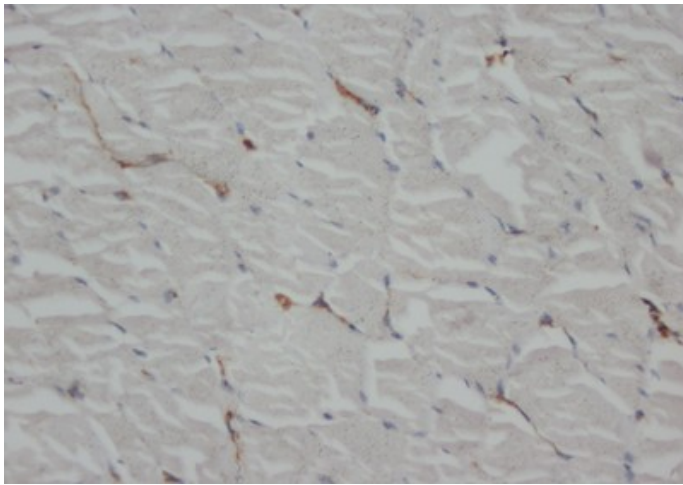
Background: The primary site of action of cytochalasin B on cell motility processes is beta-actin. Habets et al. (1992) generated hybrids that harbor only specific regions of human chromosome 7 and assigned the ACTB locus to 7p15-p12. ACTB and the other assigned beta-actin-related sequences are dispersed over at least four different chromosomes including one locus assigned to the X chromosome. A mutation of beta-actin that alters depolymerization dynamics is associated with autosomal dominant developmental malformations, deafness, and dystonia.

Synonyms: Actin cytoplasmic 1, Beta-Actin

Protein Families: ES Cell Differentiation/IPS

Protein Pathways: Adherens junction, Arrhythmogenic right ventricular cardiomyopathy (ARVC), Dilated cardiomyopathy, Focal adhesion, Hypertrophic cardiomyopathy (HCM), Leukocyte transendothelial migration, Pathogenic Escherichia coli infection, Regulation of actin cytoskeleton, Tight junction, Vibrio cholerae infection, Viral myocarditis

Product images:



Immunohistochemistry on paraffin Rat skeletal muscle sections