

Product datasheet for **AM20679PU-N**

beta V Tubulin (TUBB) Mouse Monoclonal Antibody [Clone ID: TUB-2]

Product data:

Product Type:	Primary Antibodies
Clone Name:	TUB-2
Applications:	IHC, IP, WB
Recommended Dilution:	Western Blot: 2 µg/ml. Immunohistochemistry on paraffin sections: 0.5 - 1 µg/ml.
Reactivity:	Human, Rat
Host:	Mouse
Isotype:	IgG1
Clonality:	Monoclonal
Immunogen:	Tubulin from rat brain
Specificity:	This antibody reacts to TUBB / TUBB5.
Formulation:	1.2 % sodium acetate, with 2 mg BSA and 0.01 mg sodium azide as preservative. State: Purified State: Lyophilized purified Ig fraction
Reconstitution Method:	Restore with 1.2% sodium acetate or neutral PBS
Concentration:	0,1 mg/ml (after reconstitution with PBS)
Purification:	Affinity chromatography
Conjugation:	Unconjugated
Storage:	Prior to reconstitution store at -20°C. Following reconstitution store undiluted at 2-8°C for one month or (in aliquots) at -20°C for longer. Avoid repeated freezing and thawing.
Stability:	Shelf life: one year from despatch.
Gene Name:	tubulin beta class I
Database Link:	Entrez Gene 203068 Human P07437



[View online »](#)

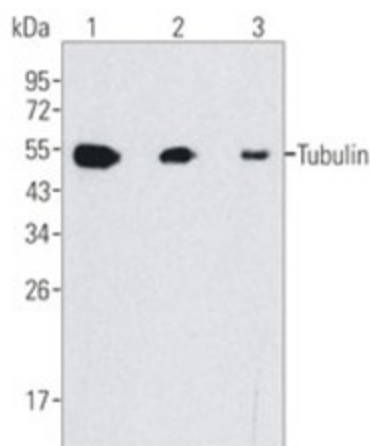
Background: Tubulin is a major cytoskeleton component that has five distinct forms. alpha and beta Tubulins form heterodimers which multimerize to form a microtubule filament. There are five beta Tubulin isoforms (beta1, beta2, beta3, beta4A and beta4B) that are expressed in mammalian tissues. beta1 and beta4 are present throughout the cytosol, beta2 is present in the nuclei and nucleoplasm, and beta3 is a neuron-specific cytoskeletal protein.

Synonyms: Tubulin beta chain, Tubulin beta-5 chain

Protein Families: Druggable Genome

Protein Pathways: Gap junction, Pathogenic Escherichia coli infection

Product images:



Western blot analysis of HeLa cell lysate, using beta-Tubulin (10B1) Mouse mAb with 1/2000, 1/5000 (lane 2) and 1/10000 dilutions.