

Product datasheet for **AM20669PU-N**

Syp Mouse Monoclonal Antibody [Clone ID: Syn-58]

Product data:

Product Type:	Primary Antibodies
Clone Name:	Syn-58
Applications:	IHC, WB
Recommended Dilution:	Western Blot: 0.5 - 1 µg/ml. Immunohistochemistry on frozen sections: 1 - 2 µg/ml.
Reactivity:	Rat
Host:	Mouse
Isotype:	IgG1
Clonality:	Monoclonal
Immunogen:	Rat retina synaptosome
Specificity:	This antibody reacts to Synaptophysin.
Formulation:	1.2 % sodium acetate, with 2 mg BSA and 0.01 mg sodium azide as preservative. State: Purified State: Lyophilized purified Ig fraction
Reconstitution Method:	Restore with 1.2% sodium acetate or neutral PBS
Concentration:	0,1 mg/ml (after reconstitution with PBS)
Purification:	Affinity chromatography
Conjugation:	Unconjugated
Storage:	Prior to reconstitution store at -20°C. Following reconstitution store undiluted at 2-8°C for one month or (in aliquots) at -20°C for longer. Avoid repeated freezing and thawing.
Stability:	Shelf life: one year from despatch.
Gene Name:	synaptophysin
Database Link:	Entrez Gene 24804 Rat P07825



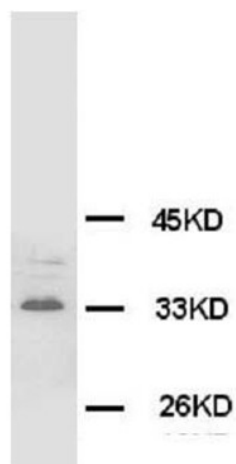
[View online »](#)

Background:

Synaptophysin (SYP) is an integral membrane protein of small synaptic vesicles in brain and endocrine cells. Ozcelik et al. (1990) concluded that the gene has 7 exons distributed over about 20 kb. SYP mapped the SYP locus to Xp11.23-p11.22. Regionalization of the gene on the X chromosome was also done with hamster/human hybrid cells in which various portions of the human X chromosome were present.

Synonyms:

Neuroendocrine Marker

Product images:

Western Blot: Rat brain tissue lysis