

Product datasheet for **AM20653PU-N**

p53 (TP53) Mouse Monoclonal Antibody [Clone ID: IMD-53]

Product data:

Product Type:	Primary Antibodies
Clone Name:	IMD-53
Applications:	IF, IHC, WB
Recommended Dilution:	Western Blot: 0.5-1 µg/ml. Immunocytochemistry. Immunohistochemistry on Frozen Sections: Use at 0.5-2 µg/ml to detect p53 in formalin or acetone fixed tissues. Immunohistochemistry on Paraffin Sections: Use at 0.5-2 µg/ml to detect p53 in formalin fixed and paraffin embedded tissues.
Reactivity:	Human
Host:	Mouse
Isotype:	IgG2a
Clonality:	Monoclonal
Immunogen:	Recombinant Human wild-type p53 protein.
Specificity:	This antibody reacts to p53 (TP53).
Formulation:	1.2% Sodium Acetate with 2 mg BSA and 0.01 mg Sodium Azide as preservative State: Purified State: Lyophilized purified Ig fraction
Reconstitution Method:	Restore with 1.2% Sodium Acetate or neutral PBS
Concentration:	0.1 mg/ml (after reconstitution with PBS)
Purification:	Affinity Chromatography
Conjugation:	Unconjugated
Storage:	Prior to reconstitution store at -20°C. Following reconstitution store undiluted at 2-8°C for one month or (in aliquots) at -20°C for longer. Avoid repeated freezing and thawing.
Stability:	Shelf life: one year from despatch.
Gene Name:	tumor protein p53



[View online »](#)

Database Link: [Entrez Gene 7157 Human P04637](#)

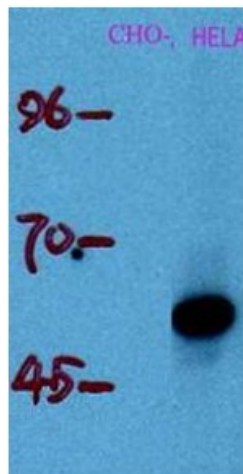
Background: The p53 tumor antigen is found in increased amounts in a wide variety of transformed cells. The protein is also detectable in many actively proliferating, nontransformed cells, but it is undetectable or present at low levels in resting cells. This protein induces cell cycle arrest or apoptosis in response to sublethal or severe DNA damage, respectively, by differential transcription of target genes and through transcription-independent apoptotic functions. The p53 protein contains 393 amino acids. Human p53 tumour antigen is Located to band 17p13. p53 mutations are common in pancreatic cancer and are absent in chronic pancreatitis.

Synonyms: Cellular tumor antigen p53, Tumor suppressor p53, Phosphoprotein p53, NY-CO-13

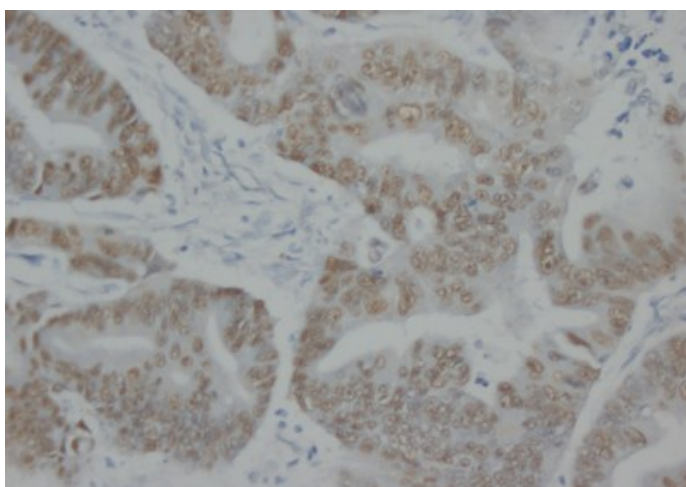
Protein Families: Druggable Genome, Stem cell - Pluripotency, Transcription Factors

Protein Pathways: Amyotrophic lateral sclerosis (ALS), Apoptosis, Basal cell carcinoma, Bladder cancer, Cell cycle, Chronic myeloid leukemia, Colorectal cancer, Endometrial cancer, Glioma, Huntington's disease, MAPK signaling pathway, Melanoma, Neurotrophin signaling pathway, Non-small cell lung cancer, p53 signaling pathway, Pancreatic cancer, Pathways in cancer, Prostate cancer, Small cell lung cancer, Thyroid cancer, Wnt signaling pathway

Product images:



Western Blot: HL-60 cell lysis



Immunohistochemistry on Human mammary cancer sections