

Product datasheet for **AM20638PU-N**

MAP2 Mouse Monoclonal Antibody [Clone ID: MP-2]

Product data:

Product Type:	Primary Antibodies
Clone Name:	MP-2
Applications:	IHC, WB
Recommended Dilution:	Western Blot: 0.5-2 µg/ml. Immunohistochemistry on Paraffin Sections: 1-2 µg/ml.
Reactivity:	Rat
Host:	Mouse
Isotype:	IgG1
Clonality:	Monoclonal
Immunogen:	Rat brain microtubule-associated proteins (MAPs)
Specificity:	This antibody recognizes MAP-2. No cross reactivity with other proteins.
Formulation:	1.2% Sodium Acetate State: Purified State: Lyophilized Stabilizer: 2 mg BSA Preservative: 0.01 mg Sodium Azide
Reconstitution Method:	Restore with 1.2% Sodium Acetate or neutral PBS
Concentration:	0.1 mg/ml (after reconstitution with 1ml PBS)
Purification:	Affinity Chromatography
Conjugation:	Unconjugated
Storage:	Store lyophilized at 2-8°C for 6 months or at -20°C long term. After reconstitution store the antibody undiluted at 2-8°C for one month or (in aliquots) at -20°C long term. Avoid repeated freezing and thawing.
Stability:	Shelf life: one year from despatch.
Gene Name:	microtubule associated protein 2
Database Link:	Entrez Gene 25595 Rat P11137



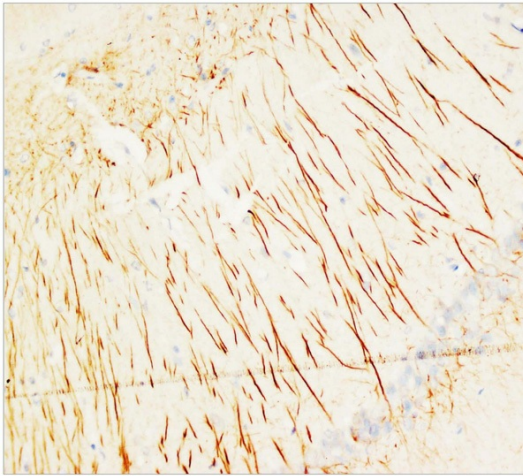
[View online »](#)

Background: MAP2, a 280-kD protein, is highly concentrated in neuronal somata and dendrites. Microtubule-associated protein 2 (MAP2) is a neurosteroid receptor. MAP2 gene contains 19 exons, and located in segment 2q34-q35. The transgenic MAP2c was present in dendrites but not in axons but transgenic MAP2c messenger RNA was limited to cell bodies.

Synonyms: Microtubule-associated protein 2, MAP2, Neuronal Marker

Protein Families: Adult stem cells, Druggable Genome, ES Cell Differentiation/IPS

Product images:



Paraffin-Embedded Section of Rat Brain Tissue stained with Monoclonal Anti-MAP2 antibody