

Product datasheet for **AM20627PU-N**

hCG beta (CGB3) Mouse Monoclonal Antibody [Clone ID: HCG-8]

Product data:

Product Type:	Primary Antibodies
Clone Name:	HCG-8
Applications:	IHC
Recommended Dilution:	Immunohistochemistry on Paraffin Sections: Use at 0.25-0.5 µg/ml to detect beta-HCG in Formalin Fixed and Paraffin Embedded Tissues.
Reactivity:	Human
Host:	Mouse
Isotype:	IgG1
Clonality:	Monoclonal
Immunogen:	Purified Human Chorionic Gonadotropin.
Specificity:	Recognizes Human Chorionic gonadotropin (beta-subunit) and does not cross reacts with other Proteins (hLH, hTSH, or hFSH).
Formulation:	1.2% Sodium Acetate containing 2 mg BSA and 0.01 mg Sodium Azide as preservative State: Purified State: Lyophilized purified IgG fraction
Reconstitution Method:	Restore with 1.2% Sodium Acetate or neutral PBS.
Concentration:	0.1 mg/ml (after reconstitution with 1 ml PBS).
Purification:	Affinity Chromatography on Protein A
Conjugation:	Unconjugated
Storage:	Store the antibody after reconstitution at 2-8°C for one month or (in aliquots) at -20°C for longer. Avoid repeated freezing and thawing.
Stability:	Shelf life: one year from despatch.
Gene Name:	chorionic gonadotropin beta subunit 3
Database Link:	Entrez Gene 1082 Human PODN86



[View online »](#)

Background:

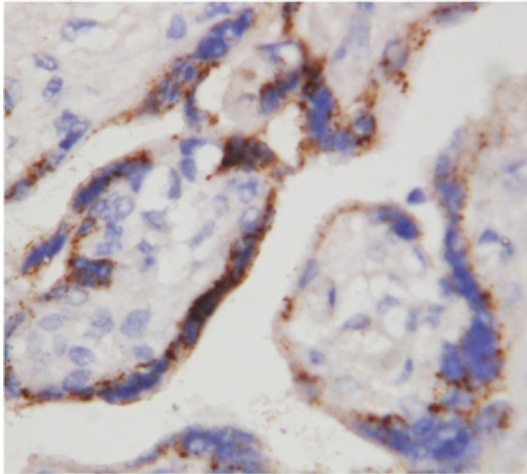
HCG beta (beta-Human Chorionic Gonadotropin), also termed as Chorionic Gonadotropin, Beta Chain (CGB). It is encoded by a multigene cluster composed of six homologous sequences. And in the family of beta-containing glycoprotein hormones, β -HCG is unique in that it contains an extension of 29 amino acids at its COOH end. HCG beta is mapped to 19q13.32 and expressed in trophoblast and various malignant tumors promotes cellular motility in vivo. Beta-HCG has a novel function in uterine adaptation to early pregnancy as well as in tumor development and underline the importance of HCG as an as yet unrecognized angiogenic factor.

Synonyms:

Choriogonadotropin subunit beta, CGB, CGB3, beta hCG, hCG-beta

Protein Families:

Druggable Genome

Product images:

HCG-beta antibody staining of Human Placenta Tissue.