

## Product datasheet for **AM20622PU-N**

### **GAP43 Mouse Monoclonal Antibody [Clone ID: GAP-8A12]**

#### **Product data:**

<b>Product Type:</b>	Primary Antibodies
<b>Clone Name:</b>	GAP-8A12
<b>Applications:</b>	IF, IHC, IP, WB
<b>Recommended Dilution:</b>	Western Blot: 0.5 - 1 µg/ml. Immunohistochemistry on frozen and paraffin sections: 1 - 2 µg/ml.
<b>Reactivity:</b>	Chicken, Human, Mouse, Rat, Snake
<b>Host:</b>	Mouse
<b>Isotype:</b>	IgG2a
<b>Clonality:</b>	Monoclonal
<b>Immunogen:</b>	GAP-43 from neonatal rat forebrain membranes.
<b>Specificity:</b>	This antibody reacts to GAP43.
<b>Formulation:</b>	1.2 % sodium acetate, with 2 mg BSA and 0.01 mg sodium azide as preservative. State: Purified State: Lyophilized purified Ig fraction
<b>Reconstitution Method:</b>	Restore with 1.2% sodium acetate or neutral PBS
<b>Concentration:</b>	0,1 mg/ml (after reconstitution with PBS)
<b>Purification:</b>	Affinity chromatography
<b>Conjugation:</b>	Unconjugated
<b>Storage:</b>	Prior to reconstitution store at -20°C. Following reconstitution store undiluted at 2-8°C for one month or (in aliquots) at -20°C for longer. Avoid repeated freezing and thawing.
<b>Stability:</b>	Shelf life: one year from despatch.
<b>Gene Name:</b>	growth associated protein 43
<b>Database Link:</b>	<u><a href="#">Entrez Gene 14432 Mouse</a></u> <u><a href="#">Entrez Gene 29423 Rat</a></u> <u><a href="#">Entrez Gene 2596 Human</a></u> <u><a href="#">P17677</a></u>



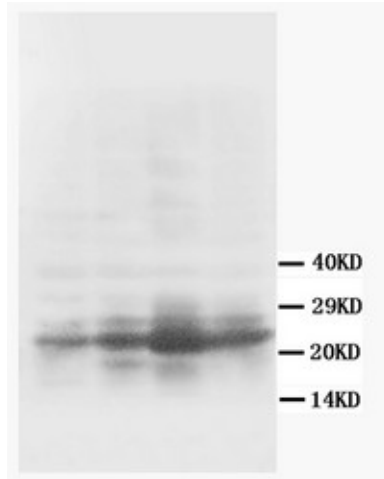
[View online »](#)

**Background:**

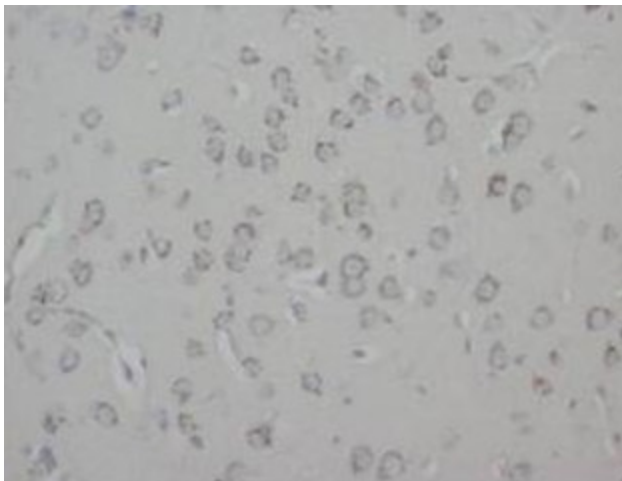
GAP43 is expressed by developing and regenerating neurons, and to a lesser extent, reactive glial cells. It is used widely to specifically label injured neurons and to score neuronal regeneration. GAP43 is also a neuronal growth cone protein thought to be involved in pathfinding. GAP43 is considered to be a crucial component of an effective regenerative response in the nervous system.

**Synonyms:**

Neuromodulin

**Product images:**


Lane 1: MCF7 whole cell lysate Lane 2: HeLa whole cell lysate Lane 3: MM453 whole cell lysate Lane 4: MM231 whole cell lysate



Immunohistochemical analysis of paraffin embedded Rat tissue sections (brain) using GAP43 antibody