

## Product datasheet for **AM20612PU-N**

### Collagen III (COL3A1) Mouse Monoclonal Antibody [Clone ID: Col-29]

#### Product data:

|                        |  |
|------------------------|--|
| Product Type:          | Primary Antibodies   |
| Clone Name:            | Col-29   |
| Applications:          | IHC, WB  |
| Recommended Dilution:  | <b>Western Blot:</b> 0.25-0.5 µg/ml.<br><b>Immunohistochemistry on Frozen Sections:</b> Use at 0.5-1 µg/ml to detect Collagen type III in Formalin/Acetone fixed tissues.                |
| Reactivity:            | Human, Mouse, Rat  |
| Host:                  | Mouse  |
| Isotype:               | IgG1   |
| Clonality:             | Monoclonal   |
| Immunogen:             | Human Collagen type III  |
| Specificity:           | This antibody recognizes Collagen type III.  |
| Formulation:           | 1.2% Sodium Acetate<br>State: Purified<br>State: Lyophilized purified Ig fraction<br>Stabilizer: 2 mg BSA<br>Preservative: 0.01 mg Sodium Azide  |
| Reconstitution Method: | Restore with 1.2% Sodium Acetate or neutral PBS.   |
| Concentration:         | 0.1 mg/ml (after reconstitution with PBS)  |
| Purification:          | Affinity Chromatography  |
| Conjugation:           | Unconjugated   |
| Storage:               | Prior to reconstitution store at -20°C.<br>Following reconstitution store undiluted at 2-8°C for one month or (in aliquots) at -20°C for longer.<br>Avoid repeated freezing and thawing. |
| Stability:             | Shelf life: one year from despatch.  |
| Gene Name:             | collagen type III alpha 1 chain  |



[View online »](#)

**Database Link:** [Entrez Gene 12825 Mouse](#)[Entrez Gene 84032 Rat](#)[Entrez Gene 1281 Human](#)  
[P02461](#)

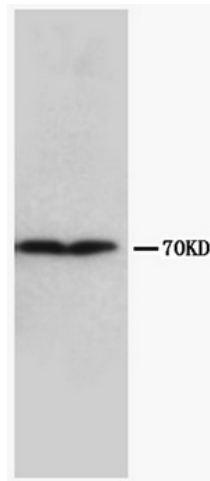
**Background:** Collagen type III, also known as COL3A1, is assigned to chromosome 2. Ultrastructural analysis of tissues from mutant mice revealed that type III collagen is essential for normal collagen I fibrillogenesis in the cardiovascular system and other organs. Type III collagen is crucial for collagen I fibrillogenesis and for normal cardiovascular development.

**Synonyms:** COL3A1

**Protein Families:** Druggable Genome

**Protein Pathways:** ECM-receptor interaction, Focal adhesion

**Product images:**



Lane 1: HT1080 whole cell lysate Lane 2: colo320 whole cell lysate