

Product datasheet for **AM20608PU-N**

Cytokeratin 18 (KRT18) Mouse Monoclonal Antibody [Clone ID: CK-18]

Product data:

Product Type:	Primary Antibodies
Clone Name:	CK-18
Applications:	IHC, WB
Recommended Dilution:	Western blot: Use at 0.5-1 µg/ml with the appropriate system to detect Cytokeratin peptide 18 in cells and tissues. Immunohistochemistry on Frozen Sections: Use at 0.5-2 µg/ml to detect Cytokeratin peptide 18 in Formalin or Acetone Fixed Tissues. Immunohistochemistry on Paraffin Sections: Use at 1-2 µg/ml to detect Cytokeratin peptide 18 in Formalin Fixed and Paraffin Embedded Tissues.
Reactivity:	Human, Rat
Host:	Mouse
Isotype:	IgG1
Clonality:	Monoclonal
Immunogen:	Human epidermal carcinoma A-431 and MCF-7 Human breast cancer cell lines.
Specificity:	Recognizes Cytokeratin Peptide 18. No cross reactivity with other proteins.
Formulation:	1.2% Sodium Acetate containing 2mg BSA and 0.01 mg Sodium Azide as preservative State: Purified State: Lyophilized purified IgG fraction
Reconstitution Method:	Restore with 1.2% Sodium Acetate or neutral PBS.
Concentration:	0.1 mg/ml (after reconstitution with 1 ml PBS).
Purification:	Affinity Chromatography
Conjugation:	Unconjugated
Storage:	Store the antibody after reconstitution at 2-8°C for one month or (in aliquots) at -20°C for longer. Avoid repeated freezing and thawing.
Stability:	Shelf life: one year from despatch.
Gene Name:	keratin 18



[View online »](#)

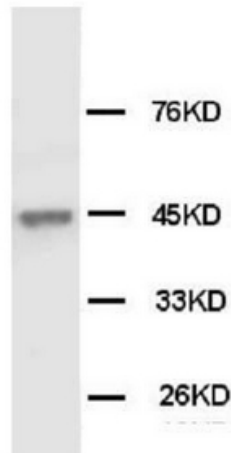
Database Link: [Entrez Gene 294853 Rat](#)[Entrez Gene 3875 Human](#)
[P05783](#)

Background: Intermediate filaments (IFs) are a structurally related family of cellular proteins that appear to be intimately involved with the cytoskeleton. Human keratin 18(KRT18) and the homologous mouse Endo B are type I IF protein subunits whose expression is restricted in adults to a variety of simple epithelial tissues. The KRT18 gene is 3,791 bp long and the keratin 18 protein is coded for by 7 exons. The K18 gene is 3791 bp in length and the K18 protein is coded for by seven exons. By Southern blotting using the genomic DNA PCR product, the gene for keratin 18 is assigned to chromosome 12. Mutation of human keratin 18 in association with cryptogenic cirrhosis

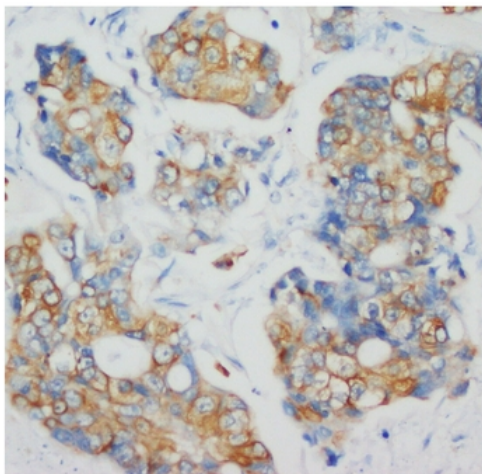
Synonyms: Cytokeratin-18, CK18, Keratin-18, Keratin 18, KRT18, CYK18, K18

Protein Pathways: Pathogenic Escherichia coli infection

Product images:



Cytokeratin Peptide 18 antibody staining of MCF-7 cell lysis by Western Blot.



Cytokeratin Peptide 18 antibody staining of Human Rectal Cancer.