

## Product datasheet for **AM20607PU-N**

### CEACAM5 Mouse Monoclonal Antibody [Clone ID: CEA-9]

#### Product data:

Product Type:	Primary Antibodies
Clone Name:	CEA-9
Applications:	IHC, WB
Recommended Dilution:	<b>Western blot:</b> Use at 0.5-1 µg/ml with the appropriate system to detect CEA in cells and tissues. <b>Immunohistochemistry on Paraffin Sections:</b> Use at 0.5-2 µg/ml to detect CEA in Formalin Fixed and Paraffin Embedded Tissues.
Reactivity:	Human
Host:	Mouse
Isotype:	IgG1
Clonality:	Monoclonal
Immunogen:	Carcinoembryonic antigen (CEA) isolated from a Human colon adenocarcinoma cell line.
Specificity:	Recognizes CEA. No cross reactivity with other proteins.
Formulation:	1.2% Sodium Acetate containing 2mg BSA and 0.01 mg Sodium Azide as preservative State: Purified State: Lyophilized purified IgG fraction
Reconstitution Method:	Restore with 1.2% Sodium Acetate or neutral PBS.
Concentration:	0.1 mg/ml (after reconstitution with 1 ml PBS).
Purification:	Affinity Chromatography
Conjugation:	Unconjugated
Storage:	Store the antibody after reconstitution at 2-8°C for 3 months or (in aliquots) at -20°C for longer. Avoid repeated freezing and thawing.
Stability:	Shelf life: one year from despatch.
Gene Name:	carcinoembryonic antigen related cell adhesion molecule 5
Database Link:	<a href="#">Entrez Gene 1048 Human P06731</a>



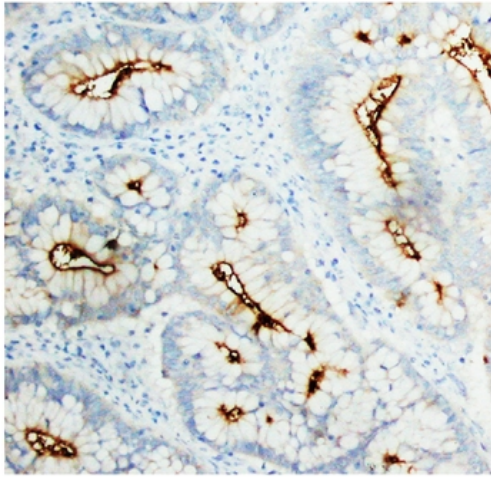
[View online »](#)

**Background:**

Carcinoembryonic antigen is a complex immunoreactive glycoprotein with a molecular weight of 180,000 comprising 60% carbohydrate. It is found in adenocarcinomas of endodermally derived digestive system epithelia and in fetal colon. Carcinoembryonic antigen is one of the most widely used tumor markers in serum immunoassay determinations of carcinoma.

**Synonyms:**

CEA, Carcinoembryonic antigen

**Product images:**

CEA antibody staining of Human Rectal Cancer.