

Product datasheet for **AM20588PU-N**

alpha 1 Fetoprotein (AFP) Mouse Monoclonal Antibody [Clone ID: AP-1]

Product data:

Product Type:	Primary Antibodies
Clone Name:	AP-1
Applications:	IHC
Recommended Dilution:	Immunohistochemistry on Paraffin Sections: At 2-4 µg/ml to detect AFP in formalin fixed and paraffin embedded tissues.
Reactivity:	Human
Host:	Mouse
Isotype:	IgG2b
Clonality:	Monoclonal
Immunogen:	Human Alpha-Fetoprotein
Formulation:	1.2% Sodium Acetate containing 2mg BSA and 0.01 mg Sodium Azide as preservative. State: Purified State: Lyophilized purified IgG fraction
Reconstitution Method:	Restore with 1.2% Sodium Acetate or neutral PBS
Concentration:	0.1 mg/ml (after reconstitution with 1 ml PBS).
Purification:	Affinity Chromatography.
Conjugation:	Unconjugated
Storage:	Store lyophilized at 2-8°C for 6 months or at -20°C long term. After reconstitution store the antibody undiluted at 2-8°C for one month or (in aliquots) at -20°C long term. Avoid repeated freezing and thawing.
Stability:	Shelf life: one year from despatch.
Gene Name:	alpha fetoprotein
Database Link:	Entrez Gene 174 Human P02771



[View online »](#)

Background:

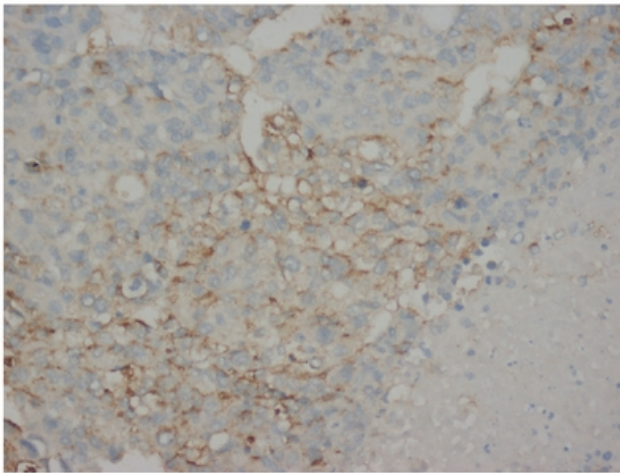
Alpha-fetoprotein (AFP) is a major plasma protein in the fetus, where it is produced by the yolk sac and liver. Direct confirmation of the assignment of the AFP gene to chromosome 4 by in situ hybridization was provided by Harper and Dugaiczky (1983), who placed the gene in the q11-q22 region, the same region as the albumin gene. Structure and evolution of human alpha-fetoprotein deduced from partial sequence of cloned cDNA. As the major fetal serum protein, Alpha-fetoprotein is not essential for embryonic development but is required for female fertility.

Synonyms:

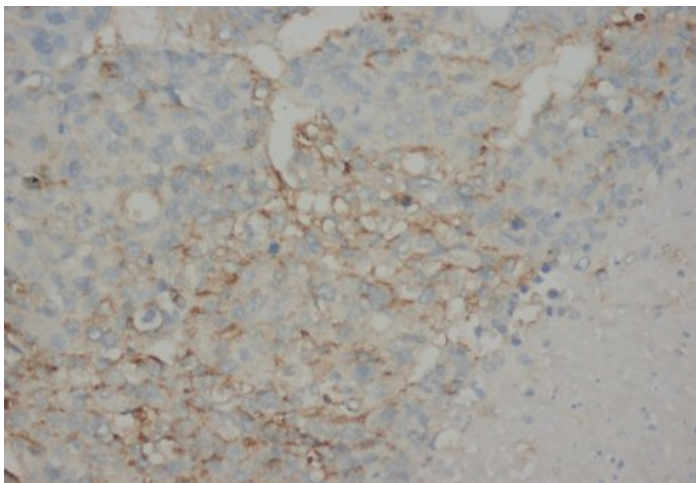
Alpha-1-fetoprotein, Alpha-fetoglobulin, HPAFP

Protein Families:

Druggable Genome, Secreted Protein

Product images:

Immunohistochemistry on Paraffin Human liver cancer



Immunohistochemistry on paraffin Human liver cancer