

Product datasheet for **AM20579PU-N**

CAMK2B Mouse Monoclonal Antibody [Clone ID: S11]

Product data:

Product Type:	Primary Antibodies
Clone Name:	S11
Applications:	ELISA, IHC, WB
Recommended Dilution:	ELISA. Immunohistochemistry on Paraffin Sections: 5 µg/ml. Western Blot.
Reactivity:	Human
Host:	Mouse
Isotype:	IgG1
Clonality:	Monoclonal
Immunogen:	CAMK2B antibody was raised against cAMK2B (AAH19070, 1 a.a. ~ 504 a.a) full length recombinant protein with GST tag. MW of the GST tag alone is 26 KDa.
Specificity:	This antibody reacts to Calcium/Calmodulin-Dependent Protein Kinase 2, Beta (CAMK2B).
Formulation:	PBS, pH 7.2 State: Purified State: Liquid purified Ig fraction
Purification:	Protein A Column
Conjugation:	Unconjugated
Storage:	Store the antibody at -20°C. Avoid repeated freezing and thawing.
Stability:	Shelf life: one year from despatch.
Gene Name:	calcium/calmodulin dependent protein kinase II beta
Database Link:	Entrez Gene 816 Human Q13554
Background:	CAMK2Beta, together with the alpha, delta, and gamma subunits, constitute the CAMK2 heteromultimeric holoenzyme serine/threonine kinase. CAMK2 beta has been implicated in diabetes and schizophrenia. At least seven isoforms are produced by alternative splicing.



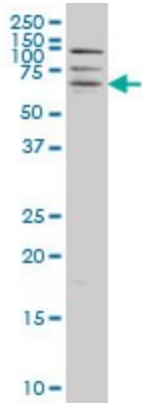
[View online »](#)

Synonyms: CAM2, CAMKB, CaM-kinase II beta chain, CaM kinase II subunit beta, CaMK-II subunit beta, CAMKIIb

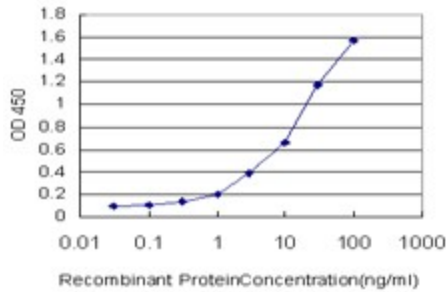
Protein Families: Druggable Genome, Protein Kinase

Protein Pathways: Calcium signaling pathway, ErbB signaling pathway, Glioma, GnRH signaling pathway, Long-term potentiation, Melanogenesis, Neurotrophin signaling pathway, Olfactory transduction, Oocyte meiosis, Wnt signaling pathway

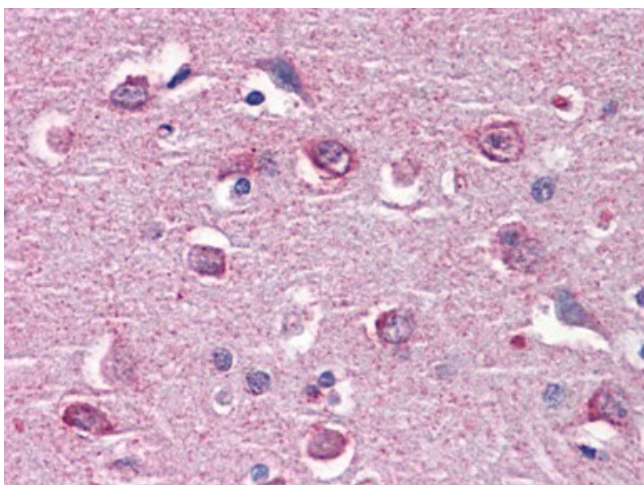
Product images:



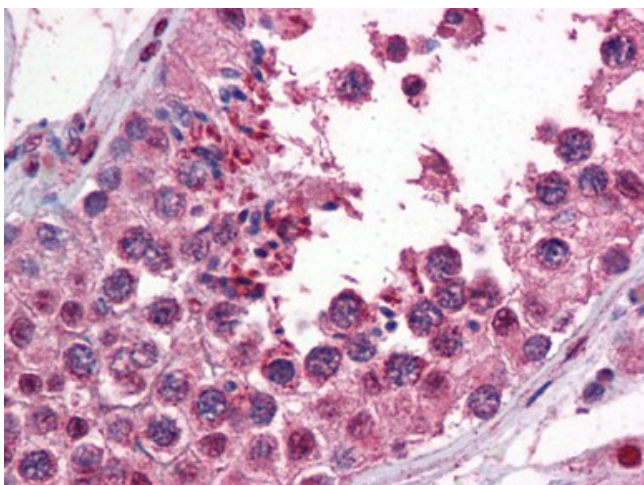
CAMK2B monoclonal antibody (AM20579PU-N), clone S11 Western Blot analysis of CAMK2B expression in HeLa NE.



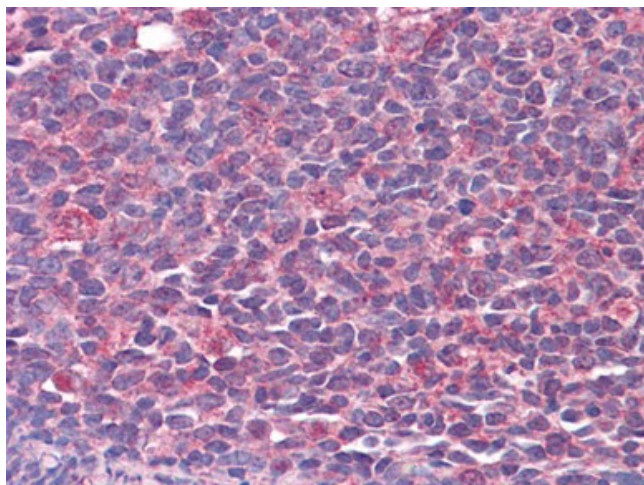
Detection limit for recombinant GST tagged CAMK2B is approximately 0.3 ng/ml as a capture antibody (AM20579PU-N).



IHC Image of AM20579PU-N Human Brain, cortex:
Formalin-Fixed, Paraffin-Embedded (FFPE)



IHC Image of AM20579PU-N Human Testis:
Formalin-Fixed, Paraffin-Embedded (FFPE)



IHC Image of AM20579PU-N Human Tonsil:
Formalin-Fixed, Paraffin-Embedded (FFPE)