

Product datasheet for **AM20569PU-N**

CD162 (SELPLG) Rat Monoclonal Antibody [Clone ID: HECA-452]

Product data:

Product Type:	Primary Antibodies
Clone Name:	HECA-452
Applications:	FC, IHC
Recommended Dilution:	Flow Cytometry. Immunohistochemistry on Paraffin Sections: 10 µg/ml.
Reactivity:	Human, Mouse
Host:	Rat
Isotype:	IgM
Clonality:	Monoclonal
Immunogen:	SELPLG / PSGL-1 / CD162 antibody was raised against stromal preparation from human tonsils
Specificity:	This antibody reacts to Selectin P Ligand (SELPLG).
Formulation:	Phosphate-buffered solution, pH 7.2, 0.09% sodium azide State: Aff - Purified State: Liquid purified Ig fraction
Concentration:	lot specific
Purification:	Affinity chromatography
Conjugation:	Unconjugated
Storage:	Store the antibody undiluted at 2-8°C.
Stability:	Shelf life: one year from despatch.
Gene Name:	selectin P ligand
Database Link:	Entrez Gene 20345 Mouse Entrez Gene 6404 Human Q14242



[View online »](#)

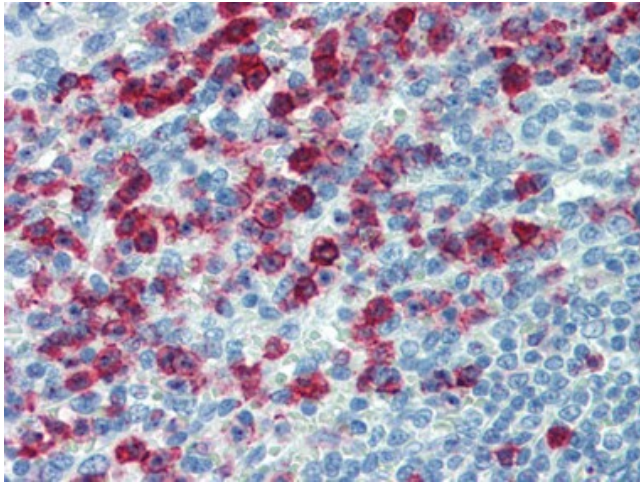
Background: SELPLG is the high affinity counter-receptor for P-selectin on myeloid cells and stimulated T lymphocytes. As such, it plays a critical role in the tethering of these cells to activated platelets or endothelia expressing P-selectin. The organization of the SELPG gene closely resembles that of CD43 and the human platelet glycoprotein Gplb-alpha both of which have an intron in the 5-prime-noncoding region, a long second exon containing the complete coding region, and TATA-less promoters.

Synonyms: PSGL-1, Selectin P ligand, SELPLG

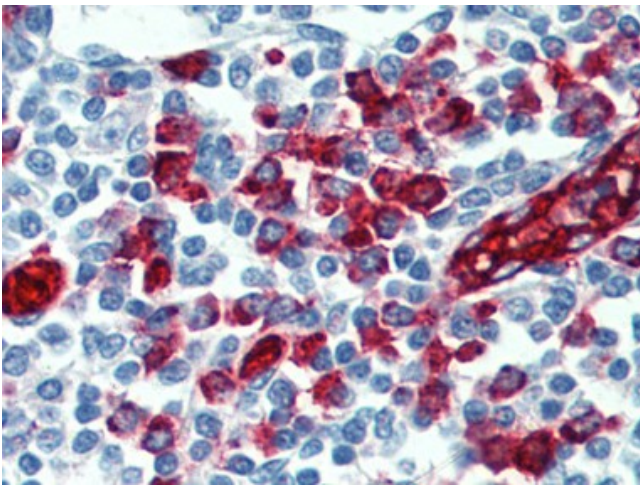
Protein Families: Druggable Genome, Transmembrane

Protein Pathways: Cell adhesion molecules (CAMs)

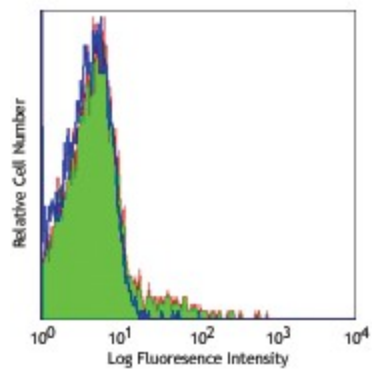
Product images:



IHC Image of AM20569PU-N: Human Spleen:
Formalin-Fixed, Paraffin-Embedded (FFPE)



IHC Image of AM20569PU-N: Human Tonsil:
Formalin-Fixed, Paraffin-Embedded (FFPE)



Human peripheral blood lymphocytes stained with purified HECA-452, followed by anti-mouse IgG (AM20569PU-N) FITC