

Product datasheet for **AM20559PU-N**

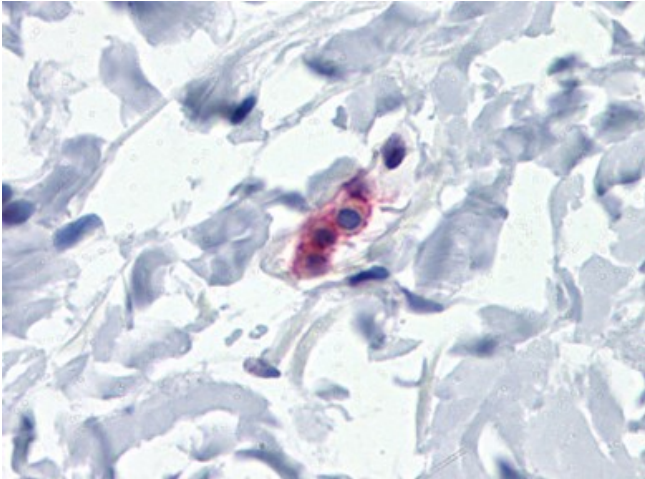
Fc epsilon RI (FCER1A) Mouse Monoclonal Antibody [Clone ID: AER-37 (CRA1)]

Product data:

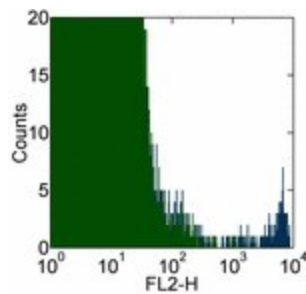
Product Type:	Primary Antibodies
Clone Name:	AER-37 (CRA1)
Applications:	FC, IHC
Recommended Dilution:	Flow Cytometry. Immunohistochemistry on Paraffin Sections: 20 µg/ml.
Reactivity:	Human
Host:	Mouse
Isotype:	IgG2b
Clonality:	Monoclonal
Immunogen:	FCER1A antibody was raised against human FCER1A
Specificity:	This antibody reacts to Fc Fragment Of Ige, High Affinity I, Receptor For; Alpha Polypeptide (FCER1A).
Formulation:	PBS, pH 7.2 containing 150 mM sodium chloride and 0.09% sodium azide State: Aff - Purified State: Liquid purified Ig fraction
Concentration:	lot specific
Purification:	Affinity chromatography
Conjugation:	Unconjugated
Storage:	Store the antibody undiluted at 2-8°C.
Stability:	Shelf life: one year from despatch.
Gene Name:	Fc fragment of IgE receptor Ia
Database Link:	Entrez Gene 2205 Human P12319
Synonyms:	IgE Fc receptor subunit alpha, Fc-epsilon RI-alpha, FCE1A, FcERI
Protein Families:	Transmembrane
Protein Pathways:	Asthma, Fc epsilon RI signaling pathway



[View online »](#)

Product images:

IHC Image of AM20559PU-N Mast Cell in Human Small Intestine: Formalin-Fixed, Paraffin-Embedded (FFPE)



Staining of human lysed whole blood with Purified Mouse IgG2b isotype control (green histogram) or Purified AER-37 (CRA1) (blue histogram) followed by Biotin Anti-Mouse IgG and Streptavidin-PE. Cells in the lymphocyte gate were used for analysis.