

Product datasheet for **AM20557SU-N**

Carbonic Anhydrase I (CA1) Mouse Monoclonal Antibody [Clone ID: 9D6D7]

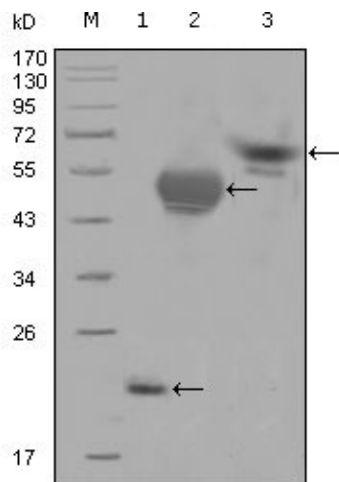
Product data:

Product Type:	Primary Antibodies
Clone Name:	9D6D7
Applications:	ELISA, IHC, WB
Recommended Dilution:	ELISA: 1/10000. Immunohistochemistry on Paraffin Sections: 1/200 - 1/300. Western Blot: 1/500 - 1/2000.
Reactivity:	Human
Host:	Mouse
Isotype:	IgG1
Clonality:	Monoclonal
Immunogen:	CA1 antibody was raised against recombinant protein encoding amino acids 25-90 of human CA1.
Specificity:	This antibody reacts to Carbonic Anhydrase I (CA1).
Formulation:	Ascites fluid containing 0.03% sodium azide State: Ascites
Conjugation:	Unconjugated
Storage:	Store the antibody undiluted at 2-8°C for one month or (in aliquots) at -20°C for longer. Avoid repeated freezing and thawing.
Stability:	Shelf life: one year from despatch.
Gene Name:	carbonic anhydrase 1
Database Link:	Entrez Gene 759 Human P00915
Synonyms:	Carbonic anhydrase I, Carbonate dehydratase I, Carbonic anhydrase B, CA1, CAB, CA-I
Protein Families:	Druggable Genome
Protein Pathways:	Nitrogen metabolism

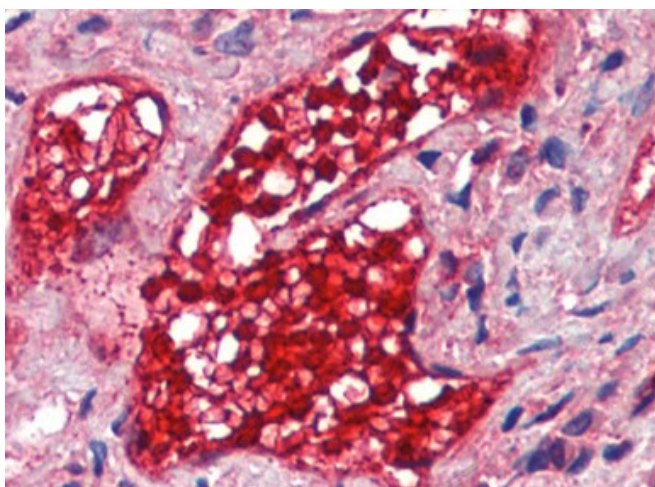


[View online »](#)

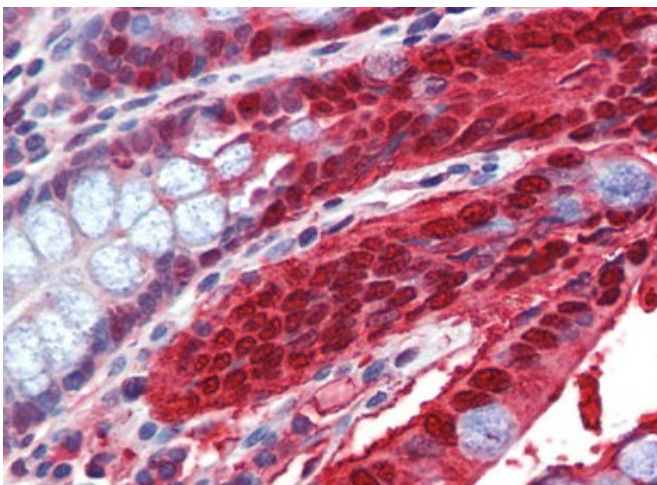
Product images:



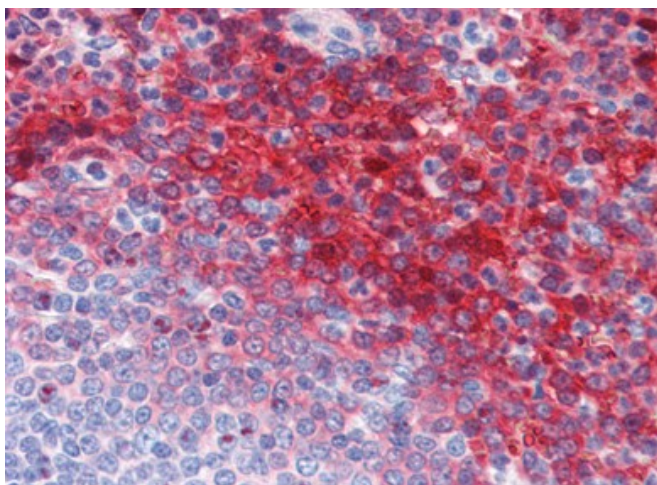
Western blot analysis using anti-CA1 monoclonal antibody (AM20557SU-N) against truncated Trx-CA1 recombinant protein, MBP-CA1 (aa25-90) recombinant protein and full length CA1 (aa1-261)-hlgGfc transfected CHO-K1 cell lysate (3).



IHC Image of AM20557SU-N Vessel, red blood cells, Human: Formalin-Fixed, Paraffin-Embedded (FFPE)



IHC Image of AM20557SU-N Colon, Human:
Formalin-Fixed, Paraffin-Embedded (FFPE)



IHC Image of AM20557SU-N Spleen, Human:
Formalin-Fixed, Paraffin-Embedded (FFPE)