

Product datasheet for **AM20542PU-N**

EMA (MUC1) Mouse Monoclonal Antibody [Clone ID: n.a]

Product data:

Product Type:	Primary Antibodies
Clone Name:	n.a
Applications:	ELISA, IHC
Recommended Dilution:	ELISA. Immunohistochemistry on Frozen Sections. Immunohistochemistry on Paraffin Sections: 10 µg/ml.
Reactivity:	Human
Host:	Mouse
Isotype:	IgG
Clonality:	Monoclonal
Immunogen:	MUC1 antibody was raised against high molecular weight (>300kD) glycoprotein from human milk-fat globule molecule.
Specificity:	This antibody reacts to Mucin 1 (MUC1/CA15-3/CA27-29).
Formulation:	PBS, pH 7.4 containing 0.09% sodium azide State: Purified State: Liquid purified Ig fraction
Concentration:	lot specific
Purification:	Protein A chromatography
Conjugation:	Unconjugated
Storage:	Store the antibody undiluted at 2-8°C for one month or (in aliquots) at -20°C for longer. Avoid repeated freezing and thawing.
Stability:	Shelf life: one year from despatch.
Gene Name:	mucin 1, cell surface associated
Database Link:	Entrez Gene 4582 Human P15941



[View online »](#)

Background:

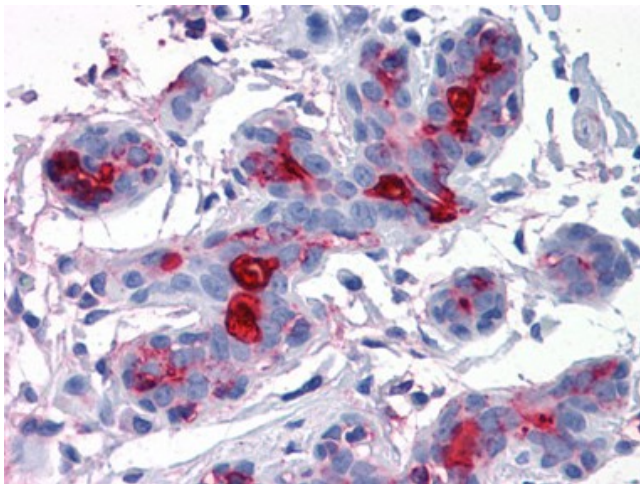
This gene is a member of the mucin family and encodes a membrane bound, glycosylated phosphoprotein. The protein is anchored to the apical surface of many epithelia by a transmembrane domain, with the degree of glycosylation varying with cell type. It also includes a 20 aa variable number tandem repeat (VNTR) domain, with the number of repeats varying from 20 to 120 in different individuals. The protein serves a protective function by binding to pathogens and also functions in a cell signaling capacity. Overexpression, aberrant intracellular localization, and changes in glycosylation of this protein have been associated with carcinomas. Multiple alternatively spliced transcript variants that encode different isoforms of this gene have been reported, but the full-length nature of only some has been determined. Also known as Cancer-associated Antigen 15-3 (CA15-3). Cancer antigen 27.29 (CA27-29), which is expressed on most carcinoma cells, is a soluble form of MUC1.

Synonyms:

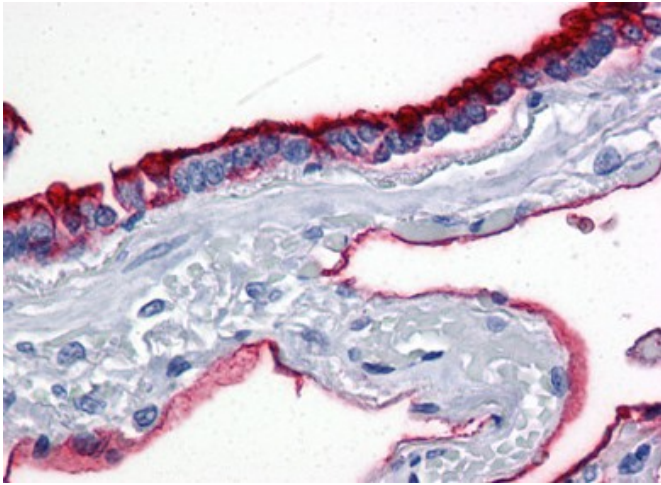
MUC-1, PEMT, Episialin, EMA, H23AG, PUM, DF3, CA 15-3

Protein Families:

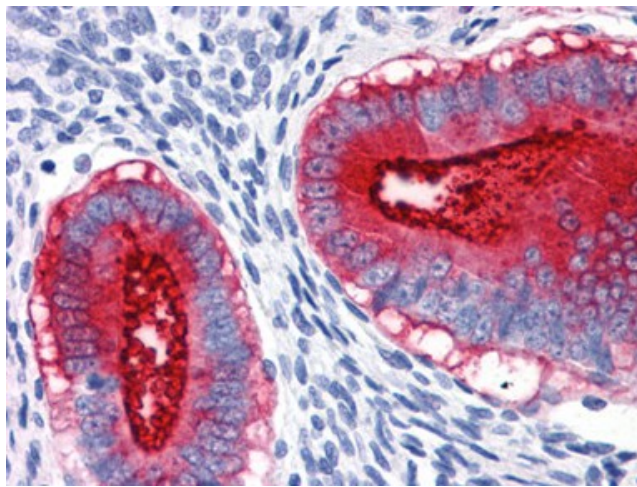
Druggable Genome, Secreted Protein, Transmembrane

Product images:

IHC Image of AM20542PU-N Breast, Human:
Formalin-Fixed, Paraffin-Embedded (FFPE)



IHC Image of AM20542PU-N Lung, Human:
Formalin-Fixed, Paraffin-Embedded (FFPE)



IHC Image of AM20542PU-N Uterus, Human:
Formalin-Fixed, Paraffin-Embedded (FFPE)