

Product datasheet for **AM20540PU-N**

Trypsin (PRSS1) Mouse Monoclonal Antibody

Product data:

Product Type:	Primary Antibodies
Clone Name:	TRYP11-224.3
Applications:	ELISA, IHC
Recommended Dilution:	ELISA: 1/12500. Immunohistochemistry on Paraffin Sections: 10 µg/ml.
Reactivity:	Human
Host:	Mouse
Isotype:	IgG1
Clonality:	Monoclonal
Immunogen:	Purified Human pancreatic Trypsin.
Specificity:	Specifically recognizes pancreatic Trypsin. Does not cross-react with pancreatic Chymotrypsin. May be used in immunoassays to detect and quantitate pancreatic Trypsin.
Formulation:	PBS, pH 7.4 State: Purified State: Liquid purified Ig fraction
Concentration:	lot specific
Purification:	Protein G Chromatography
Conjugation:	Unconjugated
Storage:	Store undiluted at 2-8°C for one month or (in aliquots) at -20°C for longer. Avoid repeated freezing and thawing.
Stability:	Shelf life: one year from despatch.
Gene Name:	protease, serine 1
Database Link:	Entrez Gene 5644 Human P07477



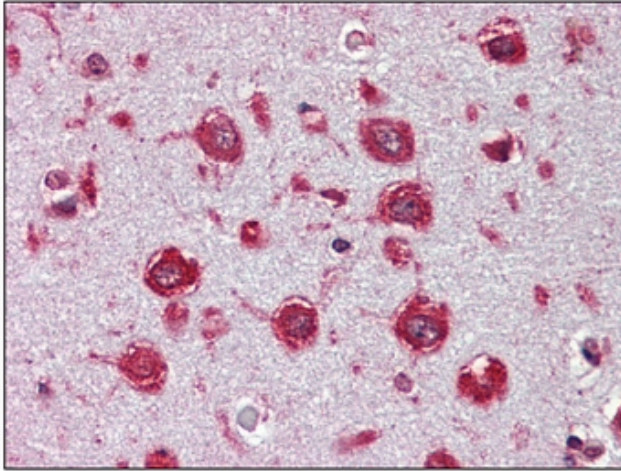
[View online »](#)

Background:

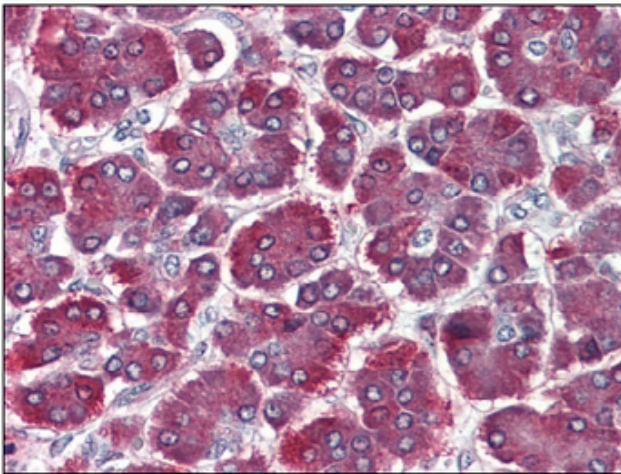
Trypsin is a 24 kDa enzyme of the serine proteinase family. It is produced in the pancreas as an inactive precursor, trypsinogen, but the active enzyme is located in the gastrointestinal tract where it degrades proteins to large peptides. Trypsin prefers lysine and arginine residues. One of the substrates for trypsin is chymotrypsinogen which is cleaved to produce active chymotrypsin. High levels of immunoreactive trypsin in the bloodstream can indicate pancreatic malfunction and this indicator is used to screen for and diagnose Cystic Fibrosis.

Synonyms:

Beta-trypsin; MGC120175; MGC149362; TRP1; TRY1; TRY4; TRYP1

Product images:

Brain, cortex, Human: Formalin-Fixed, Paraffin-Embedded (FFPE)



Pancreas, Human: Formalin-Fixed, Paraffin-Embedded (FFPE)