

Product datasheet for **AM20537PU-N**

LDHA Mouse Monoclonal Antibody [Clone ID: n.a]

Product data:

| | |
|-----------------------|--|
| Product Type: | Primary Antibodies |
| Clone Name: | n.a |
| Applications: | IHC |
| Recommended Dilution: | Immunohistochemistry on Paraffin Sections: 5 µg/ml. |
| Reactivity: | Human |
| Host: | Mouse |
| Isotype: | IgG2b |
| Clonality: | Monoclonal |
| Immunogen: | Human LDHA |
| Specificity: | Recognizes Lactate Dehydrogenase A (LDHA) |
| Formulation: | PBS, pH 7.42 containing 0.09% Sodium Azide State: Purified State: Liquid purified Ig fraction |
| Concentration: | lot specific |
| Purification: | Protein G Chromatography |
| Conjugation: | Unconjugated |
| Storage: | Store the antibody undiluted at 2-8°C for one month or (in aliquots) at -20°C for longer. Avoid repeated freezing and thawing. |
| Stability: | Shelf life: one year from despatch. |
| Gene Name: | lactate dehydrogenase A |
| Database Link: | Entrez Gene 3939 Human P00338 |
| Background: | Lactate dehydrogenase A catalyzes the conversion of L-lactate and NAD to pyruvate and NADH in the final step of anaerobic glycolysis. LDHA is found predominantly in muscle tissue and belongs to the lactate dehydrogenase family. Mutations in LDHA have been linked to exertional myoglobinuria. |
| Synonyms: | LDH-A, L-lactate dehydrogenase A chain, LDH-M, PIG19, NY-REN-59 |

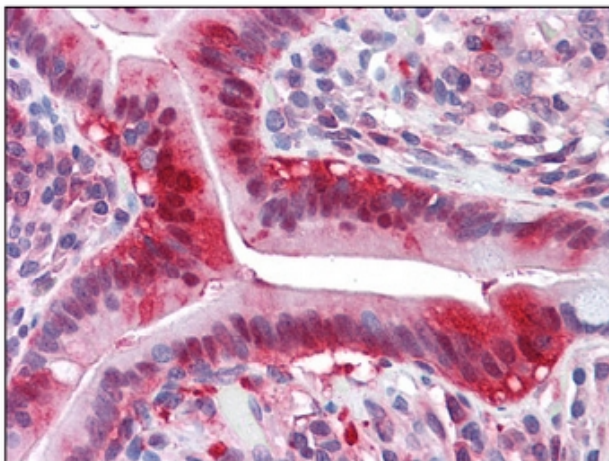


[View online »](#)

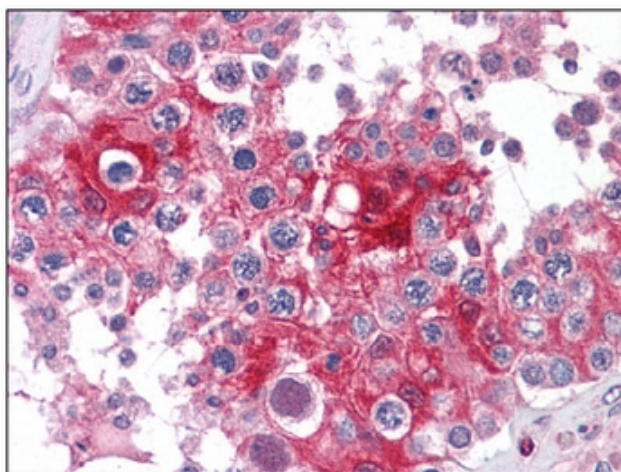
Protein Families: Druggable Genome

Protein Pathways: Cysteine and methionine metabolism, Glycolysis / Gluconeogenesis, Metabolic pathways, Propanoate metabolism, Pyruvate metabolism

Product images:



Human Small Intestine: Formalin-Fixed, Paraffin-Embedded (FFPE)



Human Testis: Formalin-Fixed, Paraffin-Embedded (FFPE)