

Product datasheet for **AM20528SU-N**

Cytokeratin 5 (KRT5) Mouse Monoclonal Antibody [Clone ID: n.a]

Product data:

Product Type:	Primary Antibodies
Clone Name:	n.a
Applications:	ELISA, IHC, WB
Recommended Dilution:	ELISA: 1/10000. Immunohistochemistry on Paraffin Sections: 1/200. Western Blot: 1/500 - 1/2000.
Reactivity:	Human
Host:	Mouse
Isotype:	IgG1
Clonality:	Monoclonal
Immunogen:	Ni-NTA purified truncated recombinant CK5-Trx-His expressed in <i>E. Coli</i> strain BL21 (DE3)
Specificity:	Recognizes Human Cytokeratin 5. Other species not tested.
Formulation:	State: Ascites
Conjugation:	Unconjugated
Storage:	Store the antibody (in aliquots) at -20°C. Avoid repeated freezing and thawing.
Stability:	Shelf life: one year from despatch.
Gene Name:	keratin 5
Database Link:	Entrez Gene 3852 Human P13647



[View online »](#)

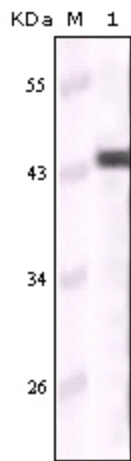
Background:

CK5 (keratin 5) is a member of the keratin gene family. Biochemically, most members of the CK family fall into one of two classes, type I (acidic polypeptides) and type II (basic polypeptides). The type II cytokeratins consist of basic or neutral proteins which are arranged in pairs of heterotypic keratin chains coexpressed during differentiation of simple and stratified epithelial tissues. This type II cytokeratin is specifically expressed in the basal layer of the epidermis with family member KRT14. The type II cytokeratins are clustered in a region of chromosome 12q12-q13. At least one member of the acidic family and one member of the basic family is expressed in all epithelial cells. Cytokeratin 5 is expressed in normal basal cells. Mutations of the Cytokeratin5 gene (KRT5) have been shown to result in the autosomal dominant disorder epidermolysis bullosa (EB). Defects in KRT5 are a cause of epidermolysis bullosa simplex.

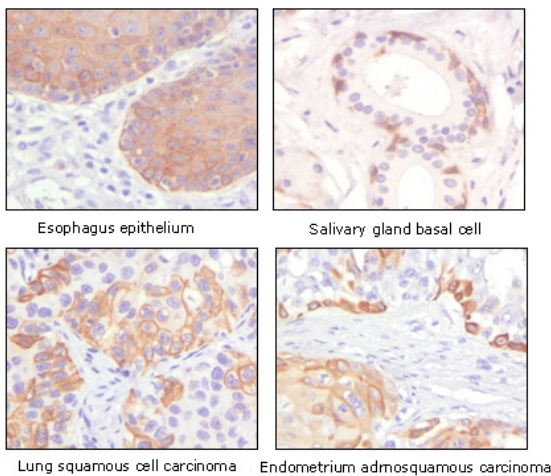
Synonyms:

KRT5, Cytokeratin-5, Keratin-5, Keratin 5, CK5, K5

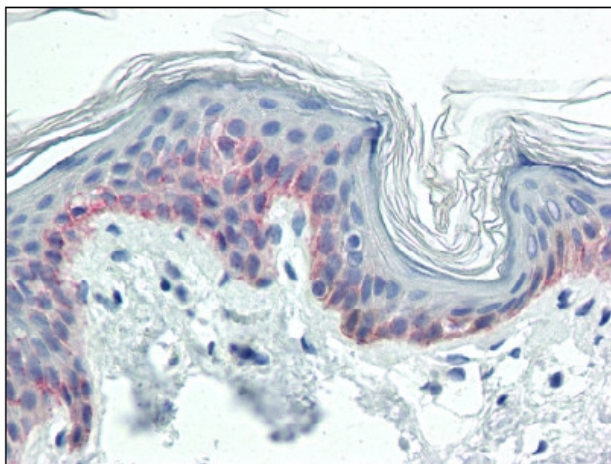
Product images:



Western Blot using CK5 monoclonal antibody against Cytokeratin-5-Trx-His recombinant protein.



Immunohistochemical analysis of Paraffin-Embedded Human normal and tumor tissue, showing cytoplasm/membrane location using Cytokeratin 5 antibody with DAB staining.



Formalin-Fixed, Paraffin-Embedded Human Skin stained with Cytokeratin 5 Antibody Cat.-No AM20528SU-N at 1/200 after heat-induced antigen retrieval.