

## Product datasheet for **AM20527SU-N**

### CD31 (PECAM1) Mouse Monoclonal Antibody [Clone ID: n.a]

#### Product data:

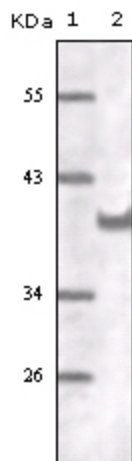
Product Type:	Primary Antibodies
Clone Name:	n.a
Applications:	ELISA, IHC, WB
Recommended Dilution:	<b>ELISA:</b> 1/10000. <b>Immunohistochemistry on Paraffin Sections:</b> 1/200. <b>Western Blot:</b> 1/500 - 1/2000.
Reactivity:	Human
Host:	Mouse
Isotype:	IgG1
Clonality:	Monoclonal
Immunogen:	Recombinant CD31 expressed in E. Coli strain BL21 (DE3)
Specificity:	Recognizes CD31/PECAM1.
Formulation:	State: Ascites State: Ascitic fluid containing 0.03% Sodium Azide as preservative
Conjugation:	Unconjugated
Storage:	Store the antibody (in aliquots) at -20°C. Avoid repeated freezing and thawing.
Stability:	Shelf life: one year from despatch.
Gene Name:	platelet and endothelial cell adhesion molecule 1
Database Link:	<a href="#">Entrez Gene 5175 Human P16284</a>
Background:	CD31 (PECAM1) is found on the surface of platelets, monocytes, neutrophils, and some types of T-cells, and makes up a large portion of endothelial cell intercellular junctions. CD31 is a member of the immunoglobulin superfamily and is likely involved in leukocyte migration, angiogenesis, and integrin activation.
Synonyms:	PECAM-1, EndoCAM, GPIIA'
Protein Families:	Druggable Genome, ES Cell Differentiation/IPS, Transmembrane



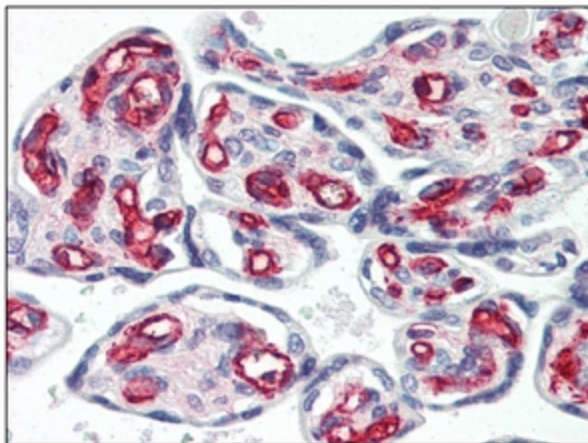
[View online »](#)

Protein Pathways: Cell adhesion molecules (CAMs), Leukocyte transendothelial migration

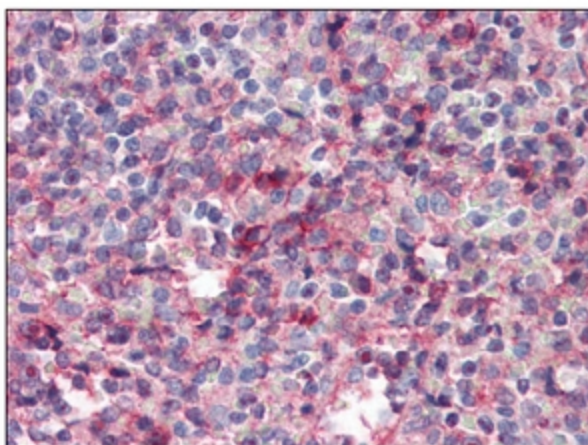
### Product images:



Western Blot using anti-Human CD31 monoclonal antibody against CD31 recombinant protein



AM20527SU-N CD31 antibody staining of Formalin-Fixed, Paraffin-Embedded Human Placenta followed by biotinylated anti-mouse IgG secondary antibody, alkaline phosphatase-streptavidin and chromogen.



AM20527SU-N CD31 antibody staining of Formalin-Fixed, Paraffin-Embedded Human Spleen followed by biotinylated anti-mouse IgG secondary antibody, alkaline phosphatase-streptavidin and chromogen.