

Product datasheet for **AM20524FC-N**

CD34 Mouse Monoclonal Antibody [Clone ID: n.a]

Product data:

Product Type:	Primary Antibodies
Clone Name:	n.a
Applications:	FC, IHC
Recommended Dilution:	Flow Cytometry. Immunohistochemistry on Frozen Sections. Immunohistochemistry on Paraffin Sections: 1/50.
Reactivity:	Human
Host:	Mouse
Isotype:	IgG1
Clonality:	Monoclonal
Immunogen:	CD34
Specificity:	Recognizes Human CD34 Class III epitope which is resistant to Neuraminidase, Chymopapain and Glycoprotease.
Formulation:	PBS containing 0.09% Sodium Azide as preservative and a stabilizing agent Label: FITC State: Liquid purified IgG fraction Label: Fluorescein
Concentration:	lot specific
Conjugation:	FITC
Storage:	Store undiluted at 2-8°C for one month or (in aliquots) at -20°C for longer. This product is photosensitive and should be protected from light. Avoid repeated freezing and thawing.
Stability:	Shelf life: one year from despatch.
Gene Name:	CD34 molecule
Database Link:	Entrez Gene 947 Human P28906



[View online »](#)

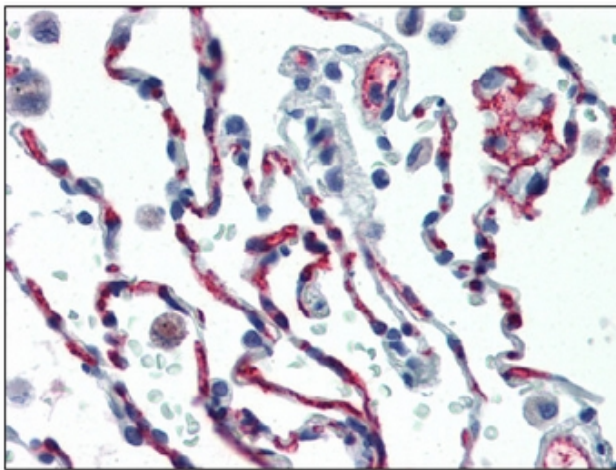
Background: The highly glycosylated 75-120 kD antigen CD34 is possibly an adhesion molecule with a putative role in early hematopoiesis by mediating the attachment of stem cells to the bone marrow extracellular matrix or directly to stromal cells. It could act as a scaffold for the attachment of lineage specific glycans, allowing stem cells to bind to lectins expressed by stromal cells or other marrow components. CD34 is thought to have a role in presenting carbohydrate ligands to selectins. The intracellular chain of the CD34 antigen is a site of phosphorylation by activated protein kinase C, suggesting a putative role in signal transduction. Two isoforms of CD34 have been reported to be generated by alternative splicing. CD34 is highly expressed on hematopoietic progenitors, as well as on endothelial cells, brain, and testis. Staining for CD34 has been used to measure angiogenesis, which reportedly predicts tumor recurrence.

Synonyms: Hematopoietic progenitor cell marker

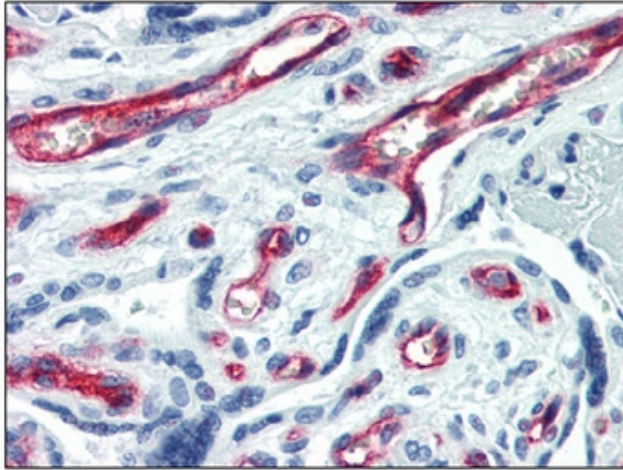
Protein Families: Adult stem cells, Cancer stem cells, Druggable Genome, Embryonic stem cells, ES Cell Differentiation/IPS, Transmembrane

Protein Pathways: Cell adhesion molecules (CAMs), Hematopoietic cell lineage

Product images:



AM20524FC-N CD34 antibody staining of Formalin-Fixed, Paraffin-Embedded Human Lung at 1/50 followed by biotinylated anti-Mouse IgG secondary antibody, alkaline phosphatase-streptavidin and chromogen.



AM20524FC-N CD34 antibody staining of Formalin-Fixed, Paraffin-Embedded Human Placenta at 1/50 followed by biotinylated anti-Mouse IgG secondary antibody, alkaline phosphatase-streptavidin and chromogen.