

## Product datasheet for **AM20515PU-N**

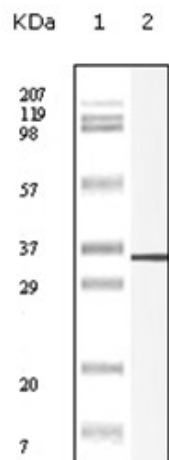
### **S100A10 Mouse Monoclonal Antibody**

#### **Product data:**

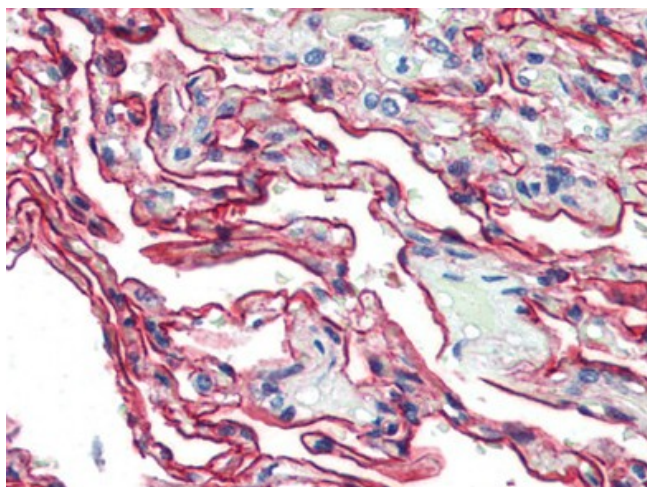
Product Type:	Primary Antibodies
Applications:	ELISA, IF, IHC, WB
Recommended Dilution:	<b>ELISA:</b> 1/10000. <b>Immunofluorescence:</b> 1/100 - 1/500. <b>Immunohistochemistry on Paraffin Sections:</b> 1/200. <b>Western Blot.</b>
Reactivity:	Human
Host:	Mouse
Isotype:	IgG1
Clonality:	Monoclonal
Immunogen:	S100A10 antibody was raised against recombinant protein
Specificity:	This antibody reacts to Calpactin I Light Chain (S100A10).
Formulation:	PBS, pH 7.4 containing 0.03% sodium azide State: Purified State: Liquid purified Ig fraction
Purification:	Protein A chromatography
Conjugation:	Unconjugated
Storage:	Store the antibody undiluted at 2-8°C for one month or (in aliquots) at -20°C for longer. Avoid repeated freezing and thawing.
Stability:	Shelf life: one year from despatch.
Gene Name:	S100 calcium binding protein A10
Database Link:	<a href="#">Entrez Gene 6281 Human P60903</a>
Synonyms:	S100-A10, ANX2LG, CAL1L, CLP11, Calpactin-1 light chain
Protein Families:	Transmembrane



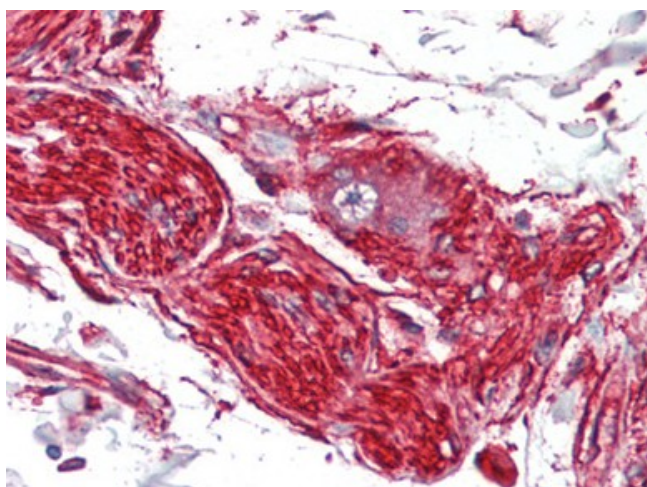
[View online »](#)

**Product images:**

Western Blot analysis using P11 antibody (AM20515PU-N) against tuncated P11 recombinant protein.



Human Lung (formalin-fixed, paraffin-embedded) stained with S100A10 antibody AM20515PU-N followed by biotinylated anti-mouse IgG secondary antibody, alkaline phosphatase-streptavidin and chromogen.



Human Nerve and Ganglion Cell (formalin-fixed, paraffin-embedded) stained with S100A10 antibody AM20515PU-N followed by biotinylated anti-mouse IgG secondary antibody, alkaline phosphatase-streptavidin and chromogen.