

Product datasheet for **AM20511PU-N**

Thyroglobulin (TG) Mouse Monoclonal Antibody [Clone ID: n.a]

Product data:

Product Type:	Primary Antibodies
Clone Name:	n.a
Applications:	ELISA, IHC
Recommended Dilution:	ELISA. Immunohistochemistry on Paraffin Sections: 10 µg/ml.
Reactivity:	Bovine, Human
Host:	Mouse
Isotype:	IgG2a
Clonality:	Monoclonal
Immunogen:	TG antibody was raised against Thyroglobulin from Human thyroid gland.
Specificity:	This antibody recognizes Thyroglobulin (TG) and does not interfere with anti-Thyroglobulin autoantibodies.
Formulation:	PBS, pH 7.4 State: Purified State: Liquid purified Ig fraction Preservative: 0.09% Sodium Azide
Concentration:	lot specific
Purification:	Protein G Chromatography
Conjugation:	Unconjugated
Storage:	Store the antibody undiluted at 2-8°C for one month or (in aliquots) at -20°C for longer. For long term storage add glycerol at 40-50%. Avoid repeated freezing and thawing.
Stability:	Shelf life: one year from despatch.
Gene Name:	thyroglobulin
Database Link:	Entrez Gene 7038 Human P01266



[View online »](#)

Background:

Thyroglobulin is the glycoprotein precursor of the iodinated thyroid hormones thyroxine (T4) and triiodothyronine (T3). Thyroglobulin is obtained from the thyroid gland and exhibits the general properties of the globulins. The human thyroglobulin (hTG) is a high molecular weight glycoprotein (605 kDa) found in the thyroid follicular cells. It plays a central role in the uptake, incorporation, and regulated biosynthesis of thyroid hormones, T4 and T3. Thyroid disorders are, in large part, due to autoimmune origin, and anti thyroglobulin autoantibodies were the first factor to be discovered. Anti hTG is found in all thyroid autoimmune diseases (Hashimoto's thyroiditis, Graves' diseases), with the highest level observed in Hashimoto's thyroiditis. Anti hTG is also characteristic of thyroid cancer, and its determination can be used for the follow up of cancer patients.

Synonyms:

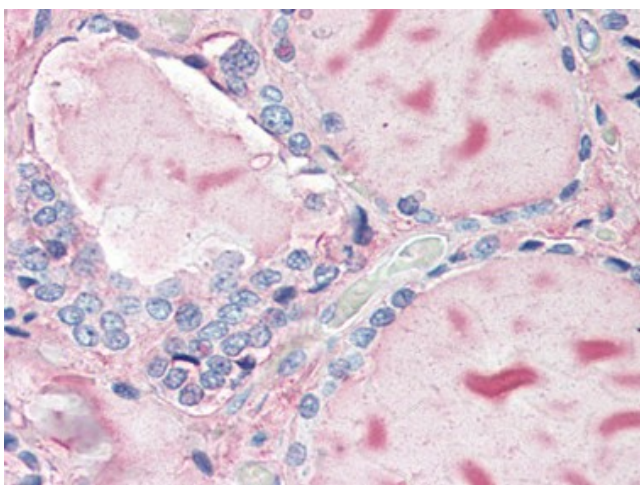
Thyreoglobulin, TGN

Protein Families:

Druggable Genome

Protein Pathways:

Autoimmune thyroid disease

Product images:

Human Thyroid (formalin-fixed, paraffin-embedded) stained with TG antibody at 10 ug/ml followed by biotinylated anti-mouse IgG secondary antibody, alkaline phosphatase-streptavidin and chromogen.