

Product datasheet for **AM20494PU-N**

IL1 Receptor I (IL1R1) (Extracell. Dom.) Mouse Monoclonal Antibody [Clone ID: 40101]

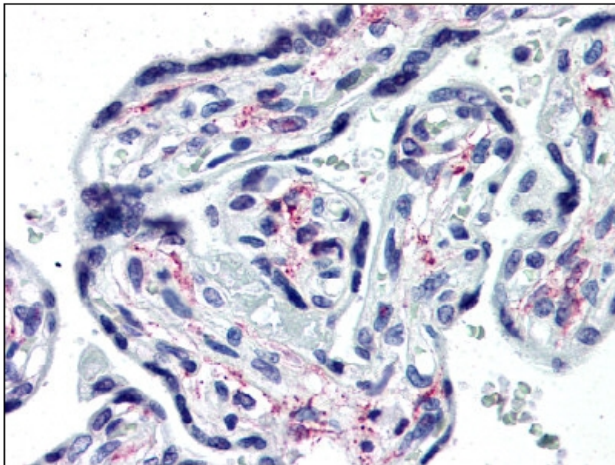
Product data:

Product Type:	Primary Antibodies
Clone Name:	IL1-31-22.2.1
Applications:	ELISA, IHC, R
Recommended Dilution:	ELISA. Immunohistochemistry on Paraffin Sections: 10 µg/ml. RIA.
Reactivity:	Human
Host:	Mouse
Isotype:	IgG2b
Clonality:	Monoclonal
Immunogen:	Extracellular domain of the type I Human IL-1 receptor
Specificity:	These antibodies react with cell surface and soluble human IL-1 receptor. Specific epitopes are unknown, but they do partially inhibit (30-50%) binding of one another to IL-1 receptor. They do not block binding of IL-1 to receptor, and they do not cross-react with receptors for Human IL-2 or IL-4.
Formulation:	PBS, pH 7.4 State: Purified State: Liquid purified Ig fraction
Concentration:	lot specific
Purification:	Affinity chromatography on Protein G
Conjugation:	Unconjugated
Storage:	Store the antibody undiluted at 2-8°C for one month or (in aliquots) at -20°C for longer. Avoid repeated freezing and thawing.
Stability:	Shelf life: one year from despatch.
Gene Name:	interleukin 1 receptor type 1
Database Link:	Entrez Gene 3554 Human P14778



[View online »](#)

Background:	IL1R is a member of the interleukin 1 receptor family. An experiment with transient gene expression demonstrated that this receptor was incapable of binding to interleukin 1 alpha and interleukin 1 beta with high affinity. IL1R is a receptor for interleukin 1 family member 9 (IL1F9). Binding to the agonist leads to the activation of NF-kappa-B. The gene for this protein and four other interleukin 1 receptor family genes, including interleukin 1 receptor, type I (IL1R1), interleukin 1 receptor, type II (IL1R2), interleukin 1 receptor-like 1 (IL1RL1), and interleukin 18 receptor 1 (IL18R1), form a cytokine receptor gene cluster in a region mapped to chromosome 2q12.
Synonyms:	IL1R, IL1RA, IL1RT1, Interleukin-1 receptor alpha, IL-1R-alpha, Interleukin-1 receptor type 1
Protein Families:	Druggable Genome, Transmembrane
Protein Pathways:	Apoptosis, Cytokine-cytokine receptor interaction, Hematopoietic cell lineage, MAPK signaling pathway

Product images:

IL1R1 antibody staining of Formalin-Fixed, Paraffin-Embedded Human Placenta at 10 ug/ml followed by biotinylated anti-mouse IgG secondary antibody, alkaline phosphatase-streptavidin and chromogen.