

## Product datasheet for **AM20491PU-N**

### GFAP (Cytopl. dom.) Mouse Monoclonal Antibody [Clone ID: n.n]

#### Product data:

Product Type:	Primary Antibodies
Clone Name:	n.n
Applications:	IF, IHC, IP, WB
Recommended Dilution:	<b>Immunofluorescence:</b> <b>Immunohistochemistry on Paraffin Sections:</b> 1 - 2 µg/ml. <b>Immunoprecipitation:</b> 2 µg/tst. <b>Western Blot:</b> 1 - 2 µg/ml.
Reactivity:	Chicken, Human, Porcine, Rat
Host:	Mouse
Isotype:	IgG1
Clonality:	Monoclonal
Immunogen:	GFAP antibody was raised against porcine spinal cord. Cellular Localization: Cytoplasmic.
Specificity:	Recognizes Porcine Glial Fibrillary Acidic Protein (GFAP) at 51-52kD.
Formulation:	PBS, pH 7.4 containing 0.2% BSA, 0.09% Sodium Azide and 40% Glycerol State: Purified State: Liquid purified Ig fraction
Concentration:	lot specific
Purification:	Protein G Chromatography
Conjugation:	Unconjugated
Storage:	Store undiluted at 2-8°C for one month or (in aliquots) at -20°C for longer. Avoid repeated freezing and thawing.
Stability:	Shelf life: one year from despatch.
Gene Name:	glial fibrillary acidic protein
Database Link:	<a href="#">Entrez Gene 24387 Rat</a> <a href="#">Entrez Gene 2670 Human</a> <a href="#">P14136</a>



[View online »](#)

**Background:**

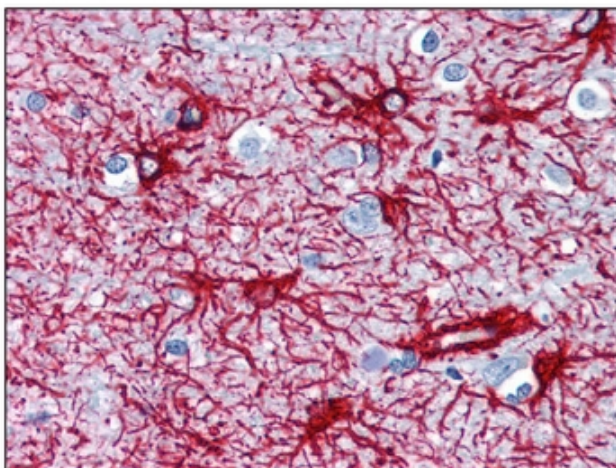
Glial fibrillary acidic protein (GFAP) is a member of the class III intermediate filament protein family. It is heavily, and specifically, expressed in astrocytes and certain other astroglia in the central nervous system, in satellite cells in peripheral ganglia, and in non myelinating Schwann cells in peripheral nerves. In addition, neural stem cells frequently strongly express GFAP. Antibodies to GFAP are therefore very useful as markers of astrocytic cells. In addition many types of brain tumor, presumably derived from astrocytic cells, heavily express GFAP. GFAP is also found in the lens epithelium, Kupffer cells of the liver, in some cells in salivary tumors and has been reported in erythrocytes.

**Synonyms:**

Glial Fibrillary Acidic Protein

**Protein Families:**

ES Cell Differentiation/IPS

**Product images:**

GFAP antibody staining of Formalin-Fixed, Paraffin-Embedded Human Brain at 1-2 ug/ml followed by biotinylated anti-mouse IgG secondary antibody, alkaline phosphatase-streptavidin and chromogen.