

Product datasheet for **AM20489PU-N**

C5R1 (C5AR1) Mouse Monoclonal Antibody [Clone ID: 3H1738]

Product data:

Product Type:	Primary Antibodies
Clone Name:	3H1738
Applications:	FC, FN, IHC, Neutralize
Recommended Dilution:	Flow Cytometry: 1/50. Func. Immunohistochemistry on Paraffin Sections: 10 µg/ml. Neut.
Reactivity:	Human, Rabbit
Host:	Mouse
Isotype:	IgG2a
Clonality:	Monoclonal
Immunogen:	C5AR - peptide: Met1 - Asn31.
Specificity:	Recognizes the C5a receptor (C5aR) CD88, which is predominantly expressed on cells of the myeloid lineage. Clone 3H1738 was raised against a synthetic peptide Met1 -Asn31 and has recently been shown to recognize the heptameric peptide (D15DKDTLD21). Clone 3H1738 inhibits C5a binding to its receptor.
Formulation:	PBS State: Purified State: Liquid purified Ig fraction
Concentration:	lot specific
Purification:	Ion Exchange Chromatography
Conjugation:	Unconjugated
Storage:	Store the antibody undiluted at 2-8°C for one month or (in aliquots) at -20°C for longer. Avoid repeated freezing and thawing.
Stability:	Shelf life: one year from despatch.
Gene Name:	complement component 5a receptor 1
Database Link:	Entrez Gene 728 Human P21730



[View online »](#)

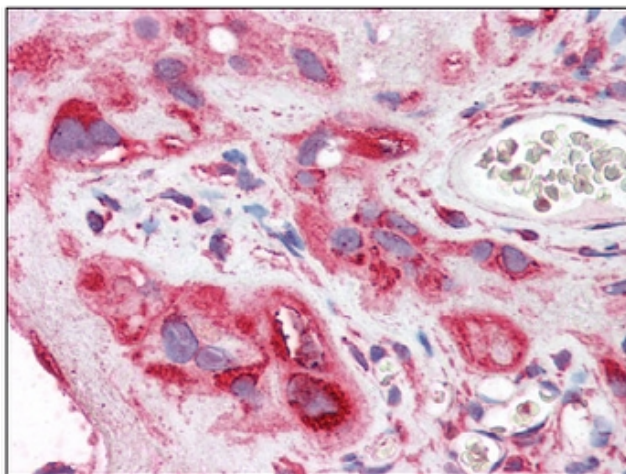
Background: C5a Anaphylatoxin Receptor mediates the effects of one of the most potent chemotactic agents known, in a wide variety of inflammatory cell types. C5a receptor 1 has been implicated in asthma.

Synonyms: C5a-R, C5aR, C5AR1, Complement Component 5a Receptor 1

Protein Families: Druggable Genome, GPCR, Transmembrane

Protein Pathways: Complement and coagulation cascades, Neuroactive ligand-receptor interaction

Product images:



AM20489PU-N C5AR1 Antibody staining of Formalin-Fixed, Paraffin-Embedded Human Placenta at 10 ug/ml after heat-induced antigen retrieval.